



Grantully Road, W9

£999,950

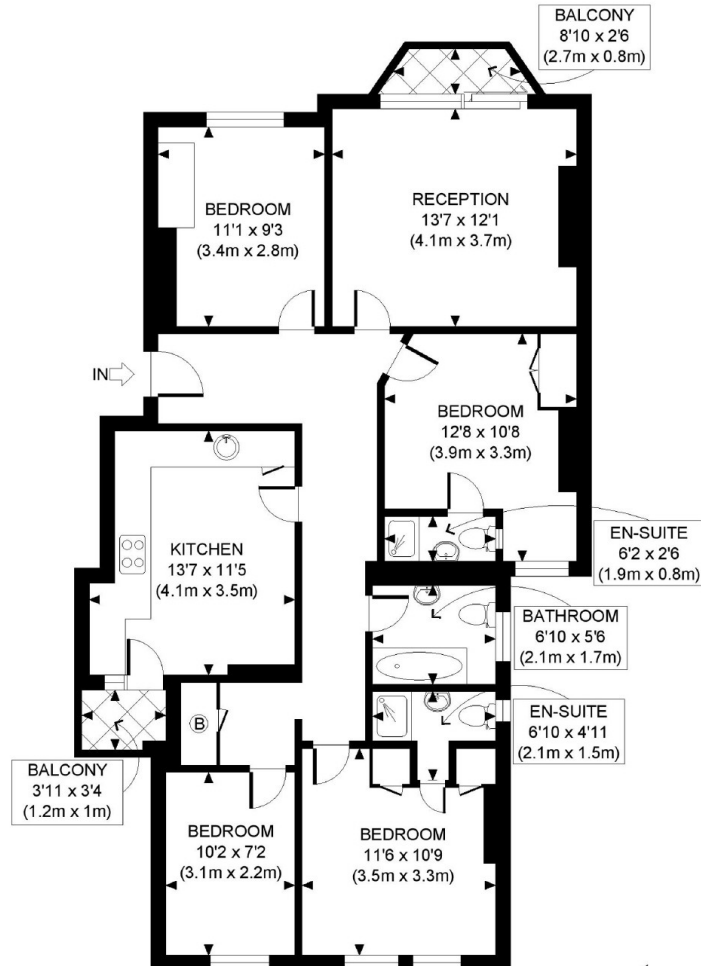
This Top floor flat is set in one of Maida Vale's prime red mansion blocks. It benefits from four bedrooms, one family bathroom, separate kitchen. Available chain free in one of Maida Vales' most in demand locations.

Leith Mansions is a quiet tree-lined street located moments from a fine selection of shops, cafés and restaurants. Also a short distance away are the excellent park and sports facilities of Paddington Recreation Ground and Little Venice. Maida Vale and Warwick Avenue tube stations (Bakerloo line) are within 0.4 miles which can take you to the likes of Paddington, Baker Street & Oxford Circus.

Features

Sought After Red Brick Mansion
Great Transport Links
Chain Free
Four Bedrooms
Top Floor Flat
915 sqft

Grantully Road, Maida Vale, W9



THIRD FLOOR
GROSS INTERNAL
FLOOR AREA 1015 SQ FT

APPROX. GROSS INTERNAL FLOOR AREA: 1015 SQ FT/ 94 SQM

PROPERTY PHOTO PLANS CO.UK
ONE STOP SHOP FOR PROPERTY MARKETING

This plan is for illustrative purposes only and should be used as such by any prospective client. Whilst every attempt has been made to ensure the accuracy of the Floor Plan contained here, measurements of the doors, windows, rooms and any other items are approximate and no responsibility is taken for any errors, omissions, or misstatement. The services, systems and appliances shown have not been tested and no guarantee as to the operability or efficiency can be given.

Dexters

Maida Vale
298 Elgin Avenue
London
W9 1JS
Sales
020 7266 2020

Energy Rating: E. We aim to make our particulars both accurate and reliable. However they are not guaranteed; nor do they form part of an offer or contract. If you require clarification on any points then please contact us, especially if you're traveling some distance to view. Please note that appliances and heating systems have not been tested and therefore no warranties can be given as to their good working order.

 **RICS** | Regulated
Estate Agent
and Letting Agent

dexters.co.uk