



Warrington Gardens, W9

£800,000

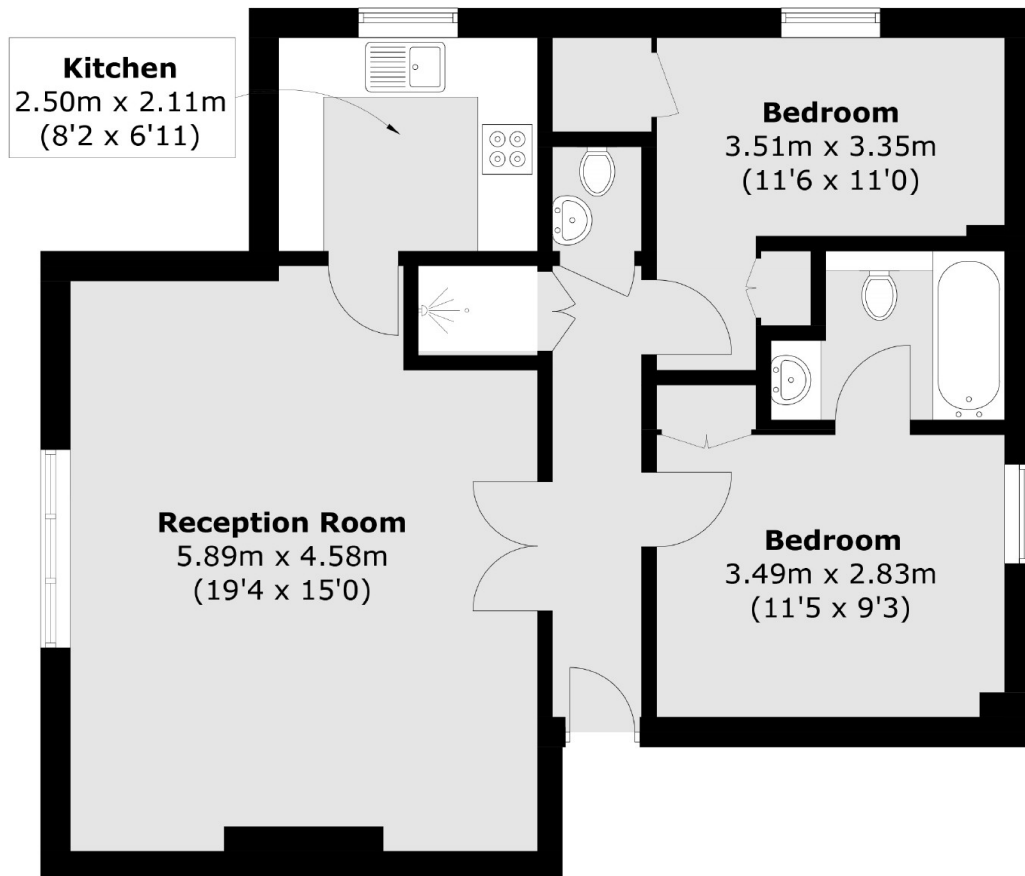
A charming two bedroom flat situated in a well-maintained stucco fronted period conversion on the top floor. The flat offers bright and spacious living accommodation with a separate kitchen, family bathroom and an additional shower room.

Warrington Gardens, Little Venice, W9 is across the road from Warwick Avenue station (Bakerloo line). Little Venice benefits from a wide array of local amenities such as café's, bars, restaurants, florists and greengrocers, accessible via Clifton Road and Formosa Street.

Features

- Prime Location
- Share of Freehold
- Communal Gardens
- Bathroom & Shower Room
- Lift Access
- Chain Free

Warrington Gardens, Maida Vale, W9



Total area (approx.): 65.7 sq. m (707.2 sq. ft)