



St. Peters Place, W9

£1,595,000


Arranged over approximately 1,543sqft, is this south facing three bedroom, two bathroom, end of terrace, which is located in a private gated mews.

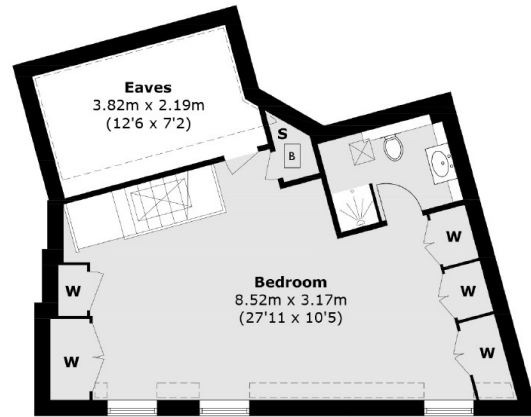
The mews house is ideally located being only a short walking distance to both Maida Vale and Warwick Avenue Underground Station (Bakerloo Line - 0.3 miles and 0.5 miles). Furthermore the shops and restaurants on Formosa Street and Clifton Road are just around the corner.

Features

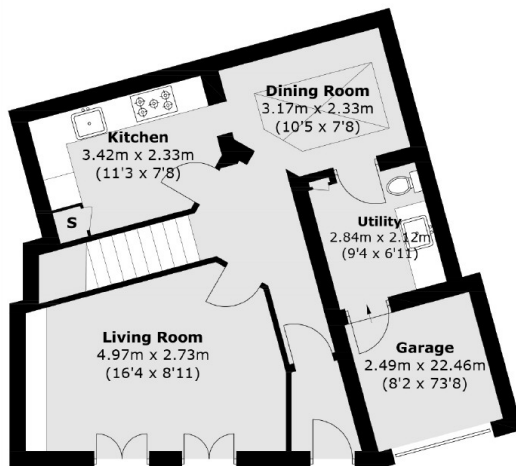
- Private Gated Mews
- Freehold
- Beautifully Presented
- Juliette Balcony
- Garage
- Chain Free

St. Peters Place, Maida Vale, W9

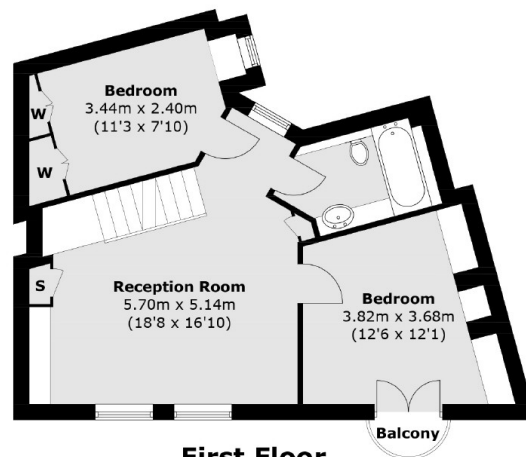
 = Reduced headroom below 1.5m / 5'0



Second Floor



Ground Floor



First Floor

Total area (approx.): 143.4 sq. m (1,543.4 sq. ft) (Excluding Eaves)
(Including Garage)
Balcony: 0.9 sq. m (10 sq. ft)