



Croxley Road, W9

£380 Per week

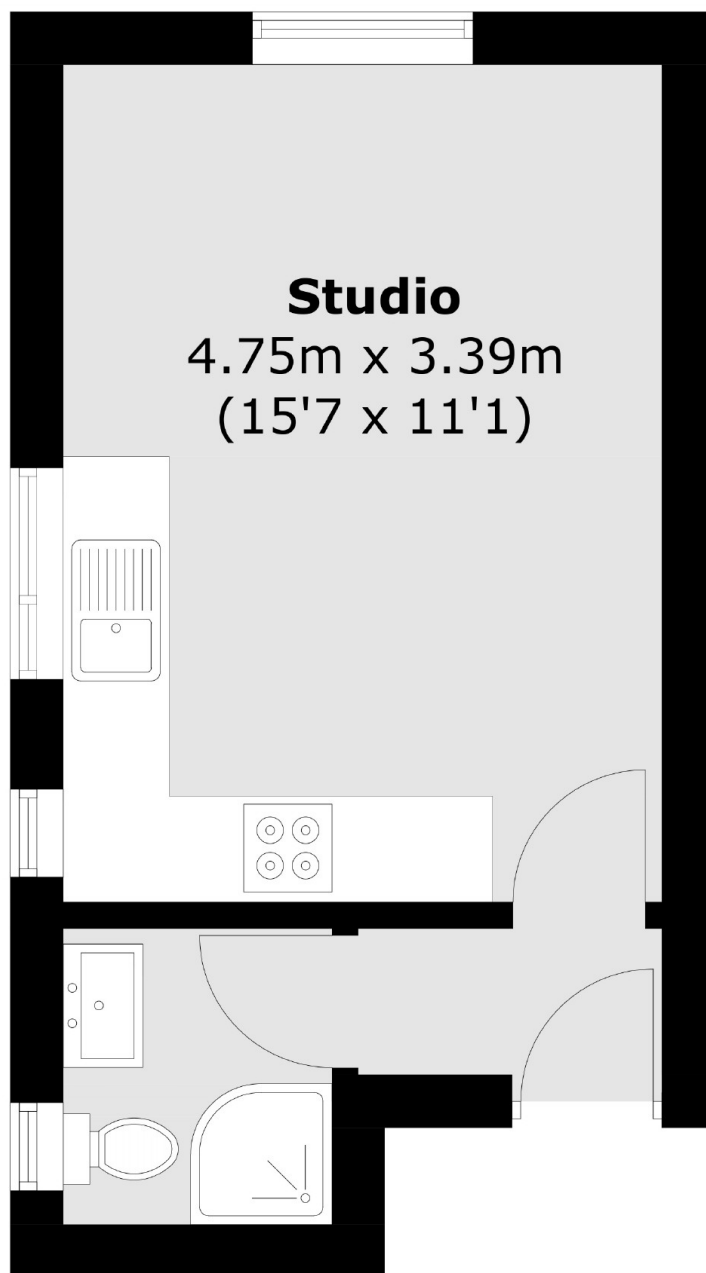
A spacious studio apartment situated within a period conversion and presented in good condition throughout. The property is modernised and comprises a fitted kitchen, contemporary bathroom and exposed brick wall feature. It further benefits from plenty of natural light and wooden floors.

Croxley Road is a tree lined residential street ideally located for all local amenities including the vast array of shops, cafés and transport links particularly Maida Vale and Queens Park stations (Bakerloo line and Overground at Queens Park).

Features

- Studio Apartment
- Period Conversion
- Open Plan
- Bright
- Modern
- Great Location

Croxley Road, Maida Vale, W9



Total area (approx.): 20.8 sq. m (223.9 sq. ft)