



Randolph Avenue, W9

£3,250,000

A stunning penthouse set in a purpose-built block. This spacious property has been recently refurbished with timeless accents, and features three sizable bedrooms with built-in storage and dedicated en suites, two terraces, a large reception room with fireplace and a separate kitchen with a utility room.

This property is in the heart of Little Venice, only moments away from the Regent's Canal and fantastic local amenities on Clifton Road.

Features

- Penthouse
- Underfloor Heating
- Long Lease
- London Horizon Views
- Prime Little Venice
- Chain Free



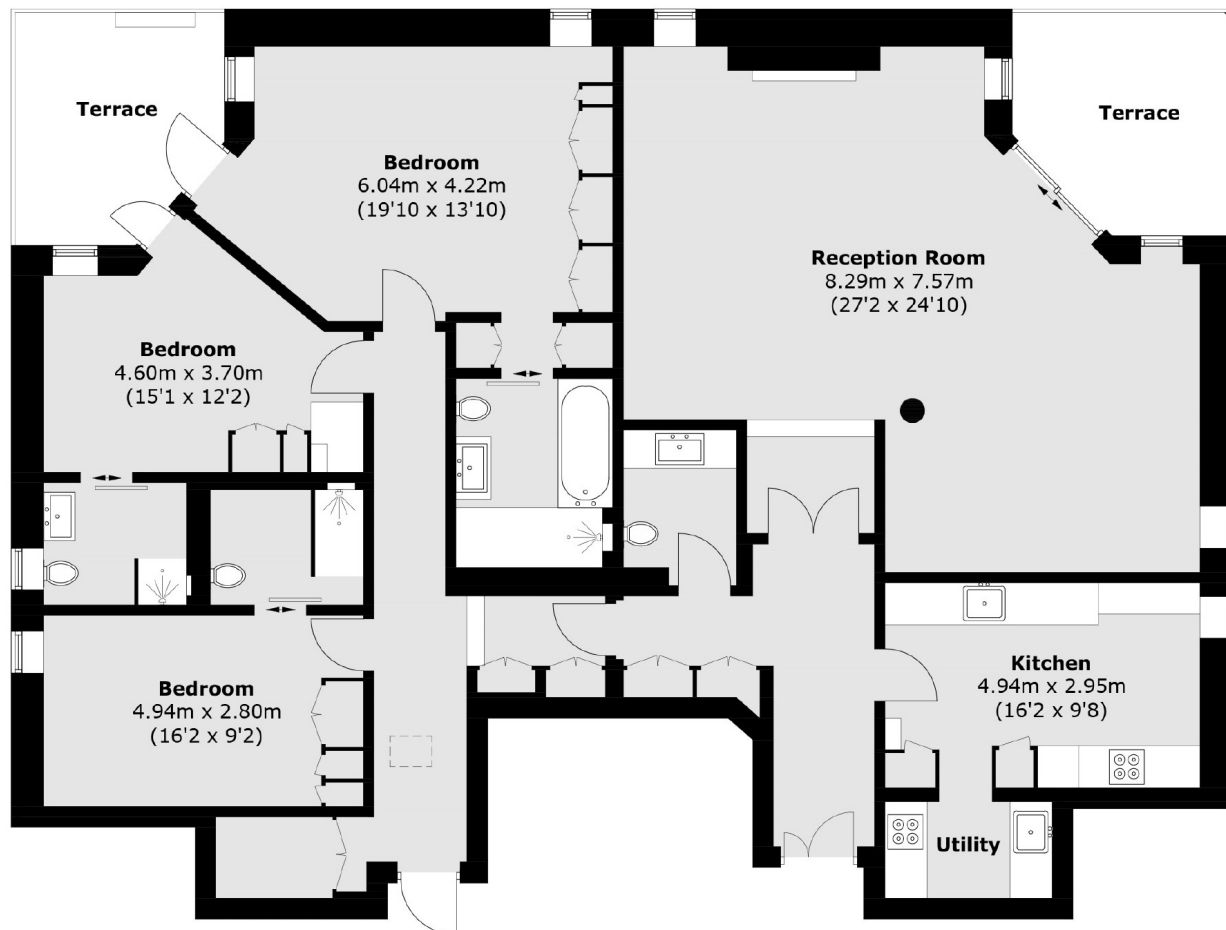
Randolph Avenue, W9

This unique penthouse apartment has been fully refurbished to an impeccable standard throughout. The property enjoys lift access and features three double bedrooms with individual en suites and built-in wardrobes, quality wooden flooring, in-built storage with lighting and brand new, fully equipped separate kitchen with an utility room. The reception has access to one of the terraces overlooking picturesque Little Venice, the second being accessed through two of the bedrooms.

The building enjoys modern communal areas, portage services, high security and CCTV.



Randolph Avenue, Maida Vale, W9



Eighth Floor

Total area (approx.): 167.2 sq. m (1,799.7 sq. ft)
Terrace: 18.4 sq. m (198.0 sq. ft)