



Godson Yard, NW6

£500,000

Arranged over two floors, this charming house comes complete with a sizable one bed featuring an en suite and built-in storage, an open plan kitchen/reception with outside space and ample storage throughout. This property is being offered chain free.

Godson Yard is located just off Kilburn Park Road and within walking distance to Maida Vale Station giving you quick access to the City and Canary Wharf on the Bakerloo Line

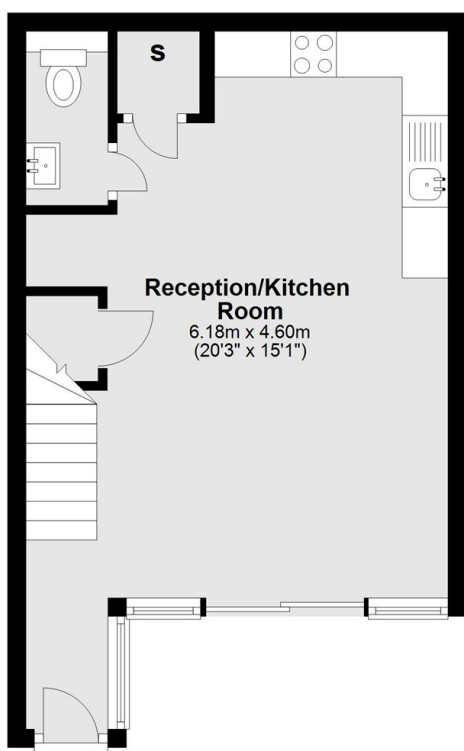
Features

- Freehold House
- Split-Level
- Open Plan Kitchen
- Gated Development
- Private

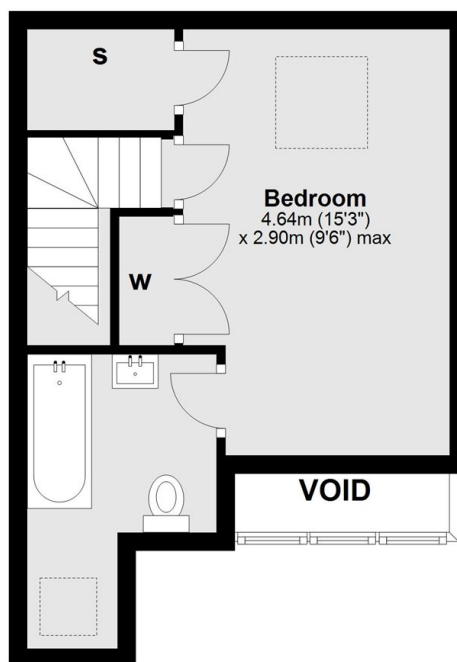
Chain Free

Godson Yard, London, NW6

Ground Floor



First Floor



Total area: approx. 53.9 sq. metres (580.1 sq. feet)

Dexters

Maida Vale
298 Elgin Avenue
London
W9 1JS
Sales
020 7266 2020

Energy Rating: D. We aim to make our particulars both accurate and reliable. However they are not guaranteed; nor do they form part of an offer or contract. If you require clarification on any points then please contact us, especially if you're traveling some distance to view. Please note that appliances and heating systems have not been tested and therefore no warranties can be given as to their good working order.

 **RICS** | Regulated
Estate Agent
and Letting Agent

[dexters.co.uk](https://www.dexters.co.uk)