



## Godson Yard, NW6

### £525,000

Arranged over two floors, this charming house comes complete with a sizable one bed featuring an en suite and built-in storage, an open plan kitchen/reception with outside space and ample storage throughout. This property is being offered chain free.

Godson Yard is located just off Kilburn Park Road and within walking distance to Maida Vale Station giving you quick access to the City and Canary Wharf on the Bakerloo Line

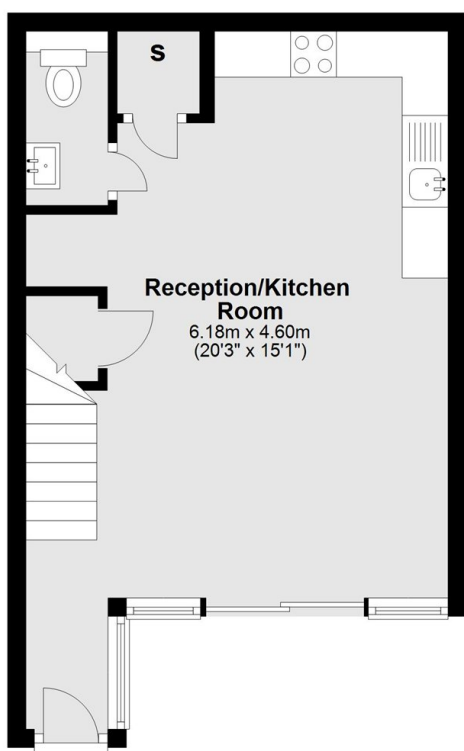
### Features

Freehold House  
Split-Level  
Open Plan Kitchen  
Gated Development  
Private

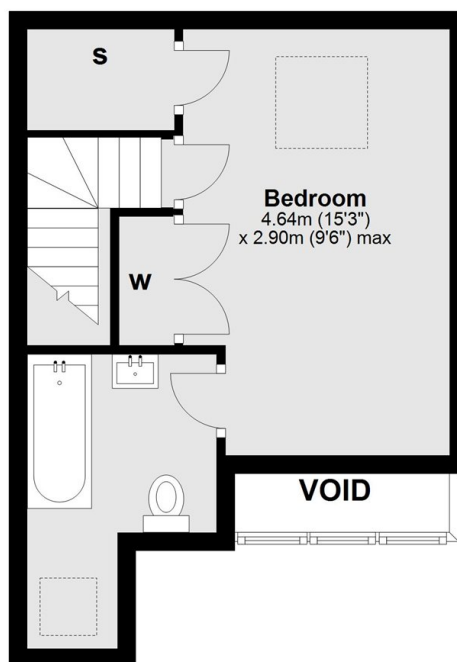
Chain Free

# Godson Yard, London, NW6

## Ground Floor



## First Floor



Total area: approx. 53.9 sq. metres (580.1 sq. feet)

# Dexters

Maida Vale  
298 Elgin Avenue  
London  
W9 1JS  
Sales  
020 7266 2020

Energy Rating: D. We aim to make our particulars both accurate and reliable. However they are not guaranteed; nor do they form part of an offer or contract. If you require clarification on any points then please contact us, especially if you're traveling some distance to view. Please note that appliances and heating systems have not been tested and therefore no warranties can be given as to their good working order.

 **RICS** | Regulated  
Estate Agent  
and Letting Agent

[dexters.co.uk](https://www.dexters.co.uk)