

Kilburn Park Road, NW6

£623 Per week

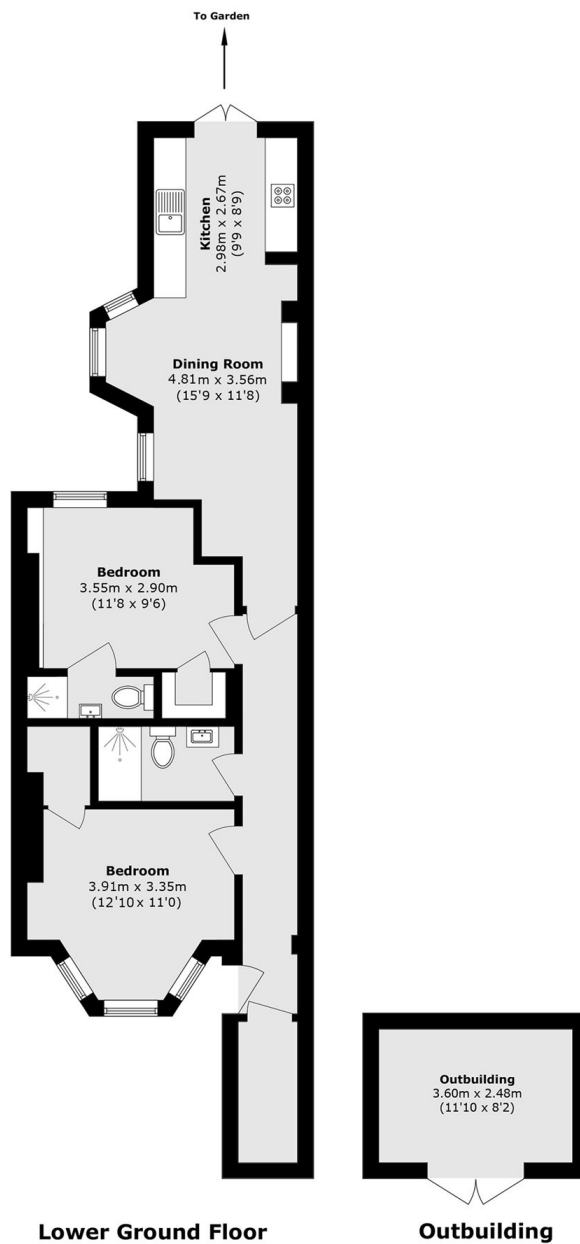
This modern two bedroom garden flat is presented in great condition throughout and has been modernised. The property comprises two double bedrooms and two bathrooms (one en-suite) and an open plan kitchen/ reception room leading to a large private garden with an open house at the back. The property further benefits from wooden floors.

Kilburn Park Road is ideally situation close to the vast array of local amenities and transport links to both Maida Vale (Bakerloo line) and Queens Park (Bakerloo line and Overground). Paddington Recreation Ground is also a short walk away.

Features

- Two Bedrooms
- Two Bathrooms
- Private Garden
- Wooden Floors
- Modern Finish
- Outhouse

Kilburn Park Road, London, NW6



Dexters

Maida Vale
298 Elgin Avenue
London
W9 1JS
Lettings
020 7266 2021

Energy Rating: . We aim to make our particulars both accurate and reliable. However they are not guaranteed; nor do they form part of an offer or contract. If you require clarification on any points then please contact us, especially if you're traveling some distance to view. Please note that appliances and heating systems have not been tested and therefore no warranties can be given as to their good working order.

RICS | Regulated
Estate Agent
and Letting Agent

[dexters.co.uk](https://www.dexters.co.uk)