



## Elgin Avenue, W9

### £825,000

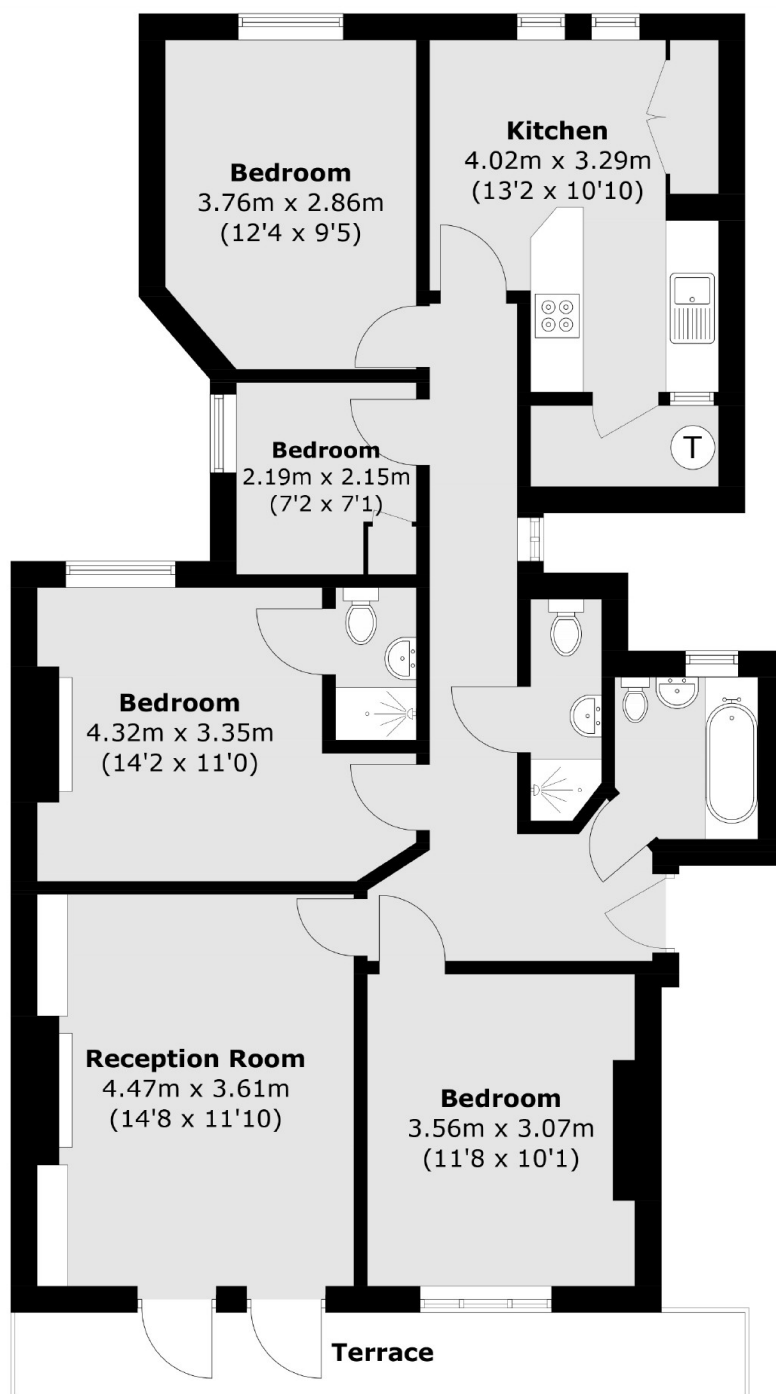
A third floor flat set in one of Maida Vale's most iconic red-brick mansion blocks. The property offers a reception room with access to the terrace, four bedrooms, one of which features an en suite, one other additional bathrooms, and a separate kitchen with a storage room.

Biddulph Mansions is situated on charming, tree-lined street Elgin Avenue, perfectly positioned just moments away from the open spaces and sports facilities of Paddington Recreation Ground. Additionally, it is close to the shops, cafés, and restaurants along Lauderdale Parade, as well as Maida Vale underground station (Bakerloo line).

### Features

- Red-Brick Mansion Block
- Private Balcony
- Four Bedrooms
- Communal Gardens
- Three Bathrooms
- Chain Free

# Elgin Avenue, Maida Vale, W9



Total area (approx.): 91.4 sq. m (983.8 sq. ft)  
Terrace (approx.): 8.0 sq. m (86.1 sq. ft)

## Dexters

Maida Vale  
298 Elgin Avenue  
London  
W9 1JS  
Sales  
020 7266 2020

Energy Rating: D. We aim to make our particulars both accurate and reliable. However they are not guaranteed; nor do they form part of an offer or contract. If you require clarification on any points then please contact us, especially if you're traveling some distance to view. Please note that appliances and heating systems have not been tested and therefore no warranties can be given as to their good working order.

 **RICS** | Regulated  
Estate Agent  
and Letting Agent

[dexters.co.uk](https://www.dexters.co.uk)