



Maida Vale, W9

£525,000

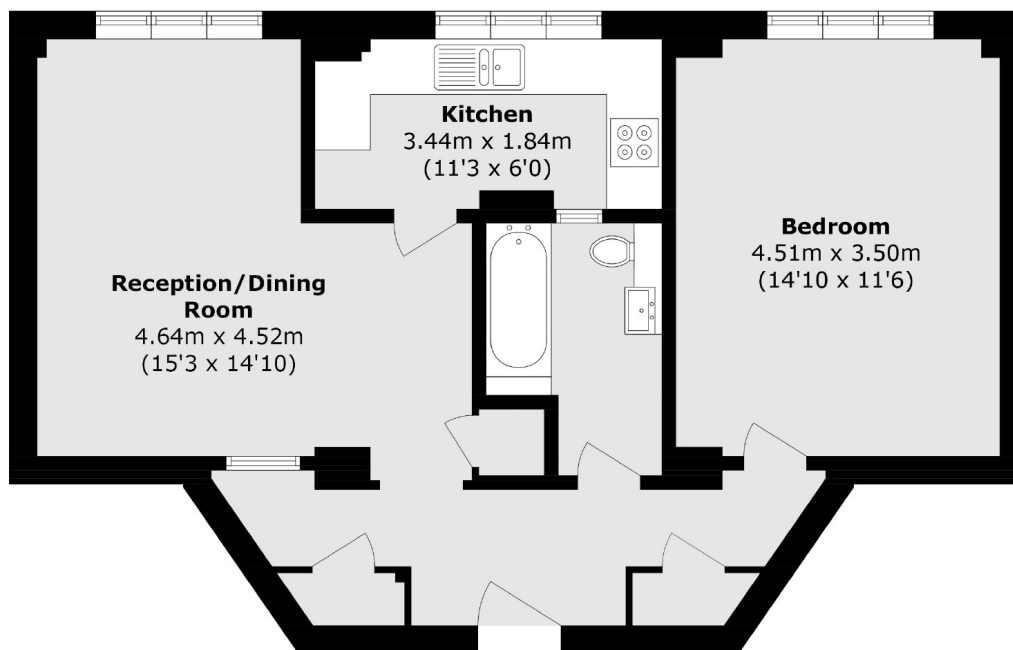
Stylish and recently refurbished second-floor flat in the desirable Florence Court, W9. Features a spacious double bedroom, modern separate kitchen, and a generous reception room. Located in a well-kept purpose-built block with lift and porter, the flat enjoys a peaceful rear outlook over Hamilton Gardens. A great opportunity for first-time buyers, downsizers, or investors.

Located moments from the chic boutiques and cafés of Elgin Avenue, Maida Vale Tube Station (Bakerloo Line) is conveniently close, providing swift access to Central London.

Features

Second Floor Flat
Purpose-Built Block
Porter & Lift
Recently Refurbished
Separate Kitchen
Chain Free

Maida Vale, Maida Vale, W9



Total area (approx.): 57.3 sq. m (616.7 sq. ft)