

## Elgin Avenue, W9

### £800,000

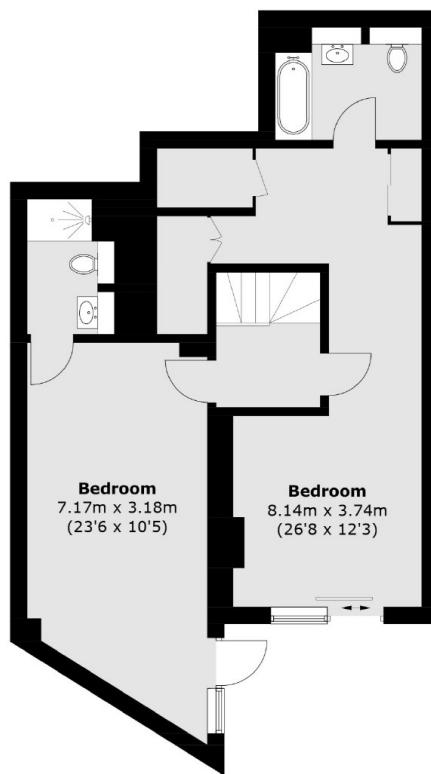
Set in a modern purpose-built block, this stunning split-level property comes complete with three double bedrooms, two of which feature an en suite, an open plan kitchen/reception with access to the private garden and is being offered chain free.

This development is situated near Westbourne Park underground station and Maida Vale underground station both offering convenient access to Central London via the Hammersmith & City, Circle and Bakerloo lines.

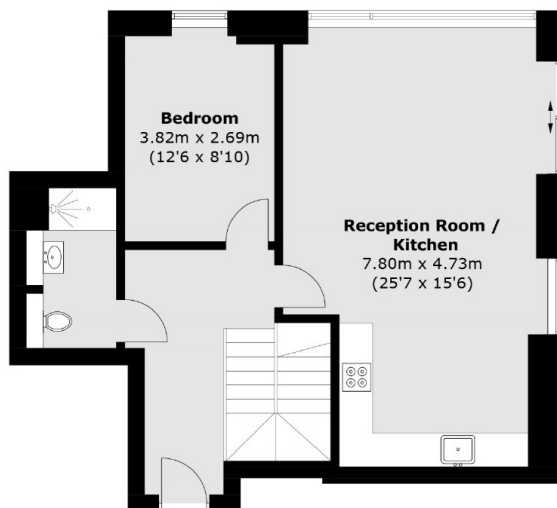
### Features

- Over 1,300 sq ft
- Three Double Bedrooms
- Three Bathrooms
- Private Garden
- Great Location
- Long Lease

# Elgin Avenue, Maida Vale, W9



**First Floor**



**Ground Floor**

Total area (approx.): 127.9 sq. m (1,376.7 sq. ft)

## Dexters

Maida Vale  
298 Elgin Avenue  
London  
W9 1JS  
Sales  
020 7266 2020

Energy Rating: B. We aim to make our particulars both accurate and reliable. However they are not guaranteed; nor do they form part of an offer or contract. If you require clarification on any points then please contact us, especially if you're traveling some distance to view. Please note that appliances and heating systems have not been tested and therefore no warranties can be given as to their good working order.

 **RICS** | Regulated  
Estate Agent  
and Letting Agent

[dexters.co.uk](https://www.dexters.co.uk)