



Fernhead Road, W9

£600,000

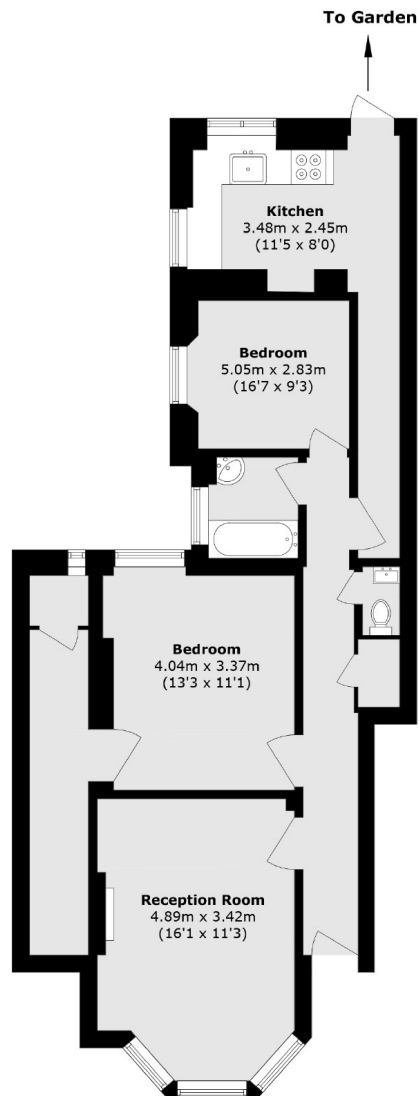
A ground floor flat set in a Victorian conversion. This property is comprised of two double bedrooms, a reception room with a bay window, bathroom and WC and a separate kitchen leading out into the garden. This property is being offered chain free.

Fernhead Road offers excellent access to Queen's Park and Westbourne Park, with numerous transport links to Central London. It's conveniently located within a mile of popular destinations, such as Little Venice, Portobello, and Paddington Recreation Ground.

Features

- Ground Floor Flat
- Private Garden
- Two Bedrooms
- High Ceilings
- Great Location
- Chain Free

Fernhead Road, Maida Vale, W9



Total area (approx.): 72.3 sq. m (778.2 sq. ft)

Dexters

Maida Vale
298 Elgin Avenue
London
W9 1JS
Sales
020 7266 2020

Energy Rating: C. We aim to make our particulars both accurate and reliable. However they are not guaranteed; nor do they form part of an offer or contract. If you require clarification on any points then please contact us, especially if you're traveling some distance to view. Please note that appliances and heating systems have not been tested and therefore no warranties can be given as to their good working order.

 **RICS** | Regulated
Estate Agent
and Letting Agent

[dexters.co.uk](https://www.dexters.co.uk)