



Portnall Road, W9

£850,000

A stunning, recently refurbished top floor flat set in a Victorian conversion. This modern flat comes complete with three bedrooms, one of which features an en suite, an open plan kitchen/reception, wooden flooring and ample storage throughout.

Portnall Road is ideally situated near the charming cafés and shops of Salusbury Road, with easy access to Queens Park, Westbourne Park, and Maida Vale underground stations, providing convenient links to Central London.

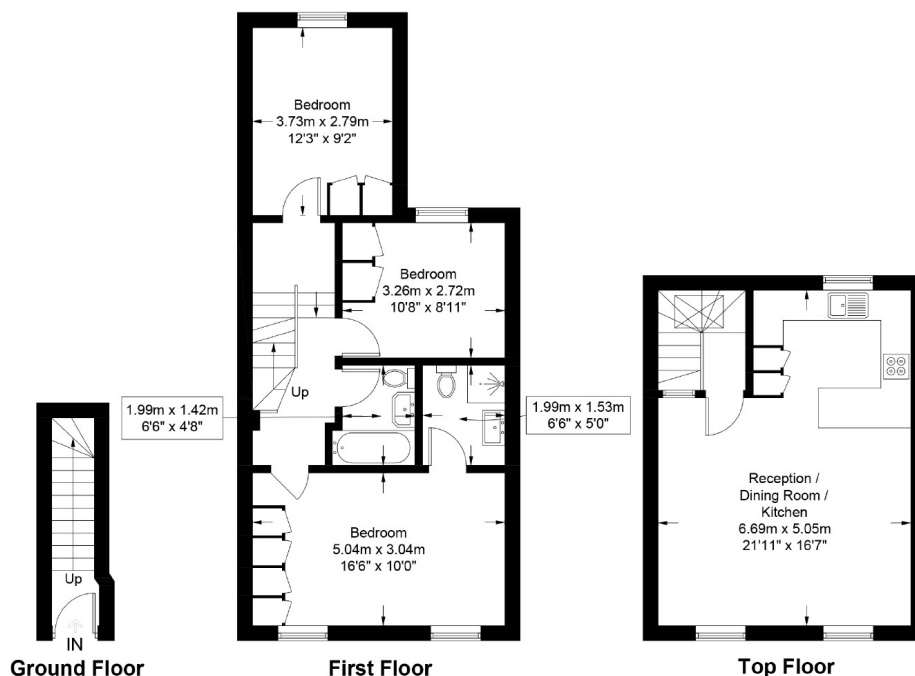
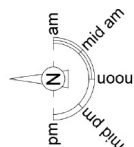
Features

- Recently Refurbished
- Modern Finish
- Top Floor Flat
- Double Glazed Windows
- Two Bathrooms
- New Lease

Portnall Road, Maida Vale, W9

Portnall Road, W9

Approximate Gross Internal Area = 1100 sq ft / 102.2 sq m



This plan is for layout guidance only and is not drawn to scale unless stated. All dimensions, including windows, doors, and the Total Gross Internal Area (GIA), are approximate. For precise measurements, please consult a qualified architect or surveyor before making any decisions based on this plan.



**Certified
Property
Measurer**

Dexters

Maida Vale
298 Elgin Avenue
London
W9 1JS
Sales
020 7266 2020

Energy Rating: D. We aim to make our particulars both accurate and reliable. However they are not guaranteed; nor do they form part of an offer or contract. If you require clarification on any points then please contact us, especially if you're traveling some distance to view. Please note that appliances and heating systems have not been tested and therefore no warranties can be given as to their good working order.



**Regulated
Estate Agent
and Letting Agent**

dexters.co.uk