



## Woodfield Road, W9

### £450,000

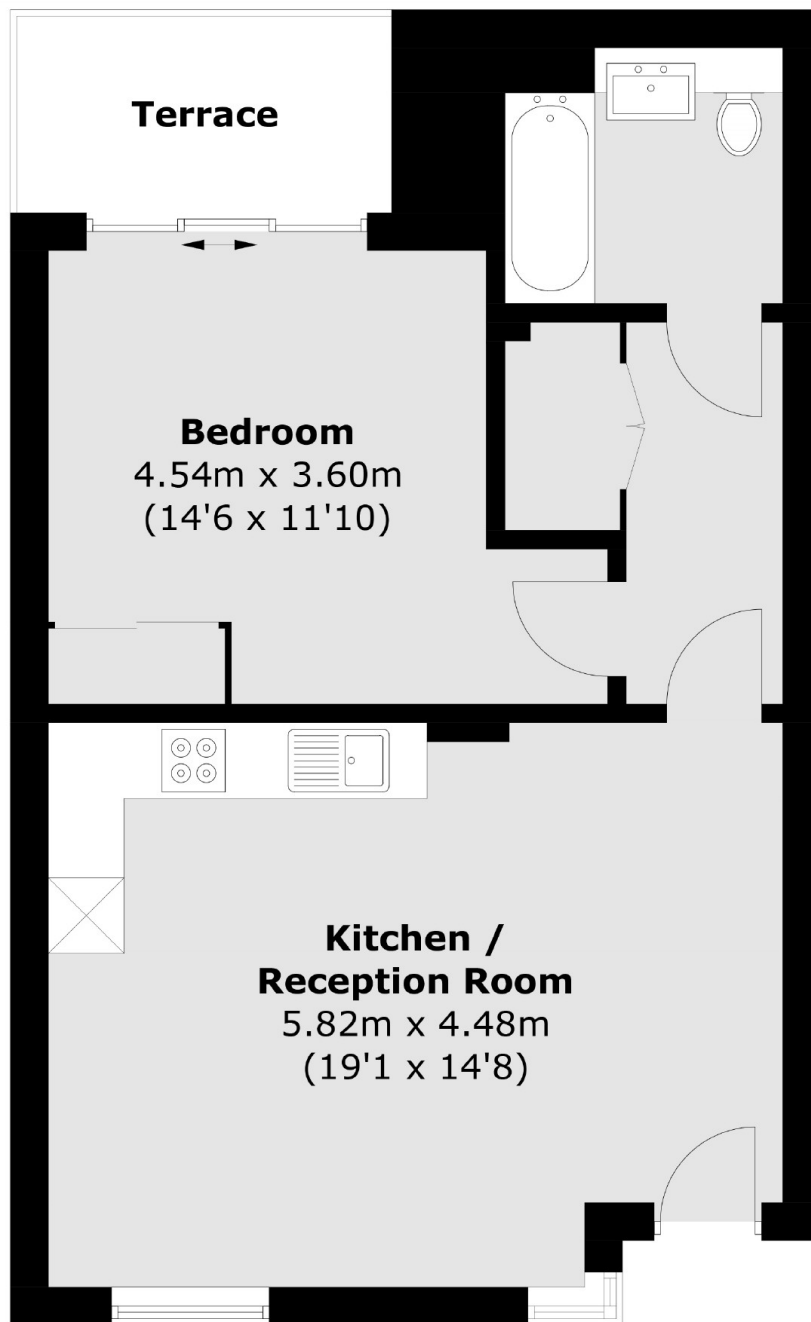
A stunning ground floor flat set in a charming modern block. This property comes complete with a double bedroom with access to a terrace, an open plan kitchen/reception and is being offered chain free.

Woodfield Road is a residential road within walking distance of the canal in Little Venice, various amenities in Harrow Road and Westbourne Park underground station (Circle and Hammersmith and City lines)

### Features

- Private Entrance
- Open Plan Kitchen/Reception
- Private Terrace
- Modern Development Block
- Chain Free
- Great Transport Links

# Woodfield Road, Maida Vale, W9



Total area (approx.): 50.8 sq. m (546.8 sq. ft)  
Terrace: 4.6 sq. m (49.5 sq. ft)