



Shirland Road, W9

£507 Per week

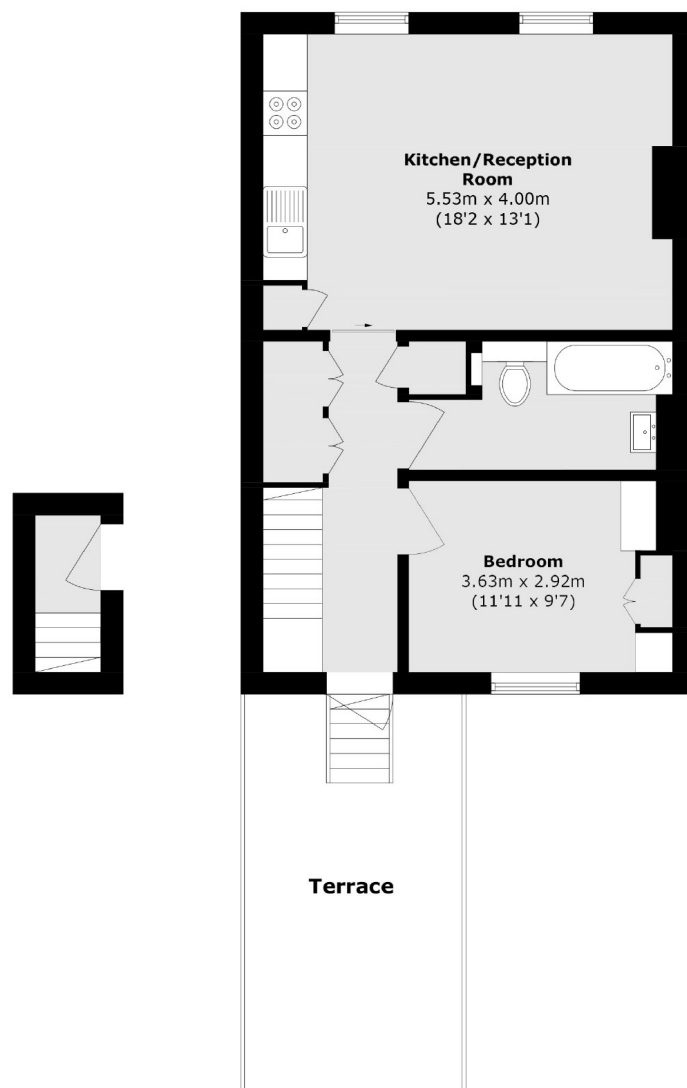
A large, top floor, one double bedroom flat in immaculate condition. The property is located within a period conversion and comprises of a large open plan kitchen / reception room, bedroom with ample storage, contemporary bathroom and a private roof terrace.

Shirland Road is ideally located for both Maida Vale and Warwick Avenue tube stations, the open spaces of Paddington recreational grounds and a number of independent shops.

Features

- One Bedroom
- Immaculate Condition
- Roof Terrace
- Open Plan Kitchen
- Wooden Floors
- Great Location

Shirland Road, Maida Vale, W9



Total area (approx.): 49.5 sq. m (532.8 sq. ft)

Terrace area (approx.): 15.7 sq. m (168.9 sq. ft)

Dexters

Maida Vale
298 Elgin Avenue
London
W9 1JS
Lettings
020 7266 2021

Energy Rating: . We aim to make our particulars both accurate and reliable. However they are not guaranteed; nor do they form part of an offer or contract. If you require clarification on any points then please contact us, especially if you're traveling some distance to view. Please note that appliances and heating systems have not been tested and therefore no warranties can be given as to their good working order.

 **RICS** | Regulated
Estate Agent
and Letting Agent

[dexters.co.uk](https://www.dexters.co.uk)