



Maida Vale, W9

£475,000

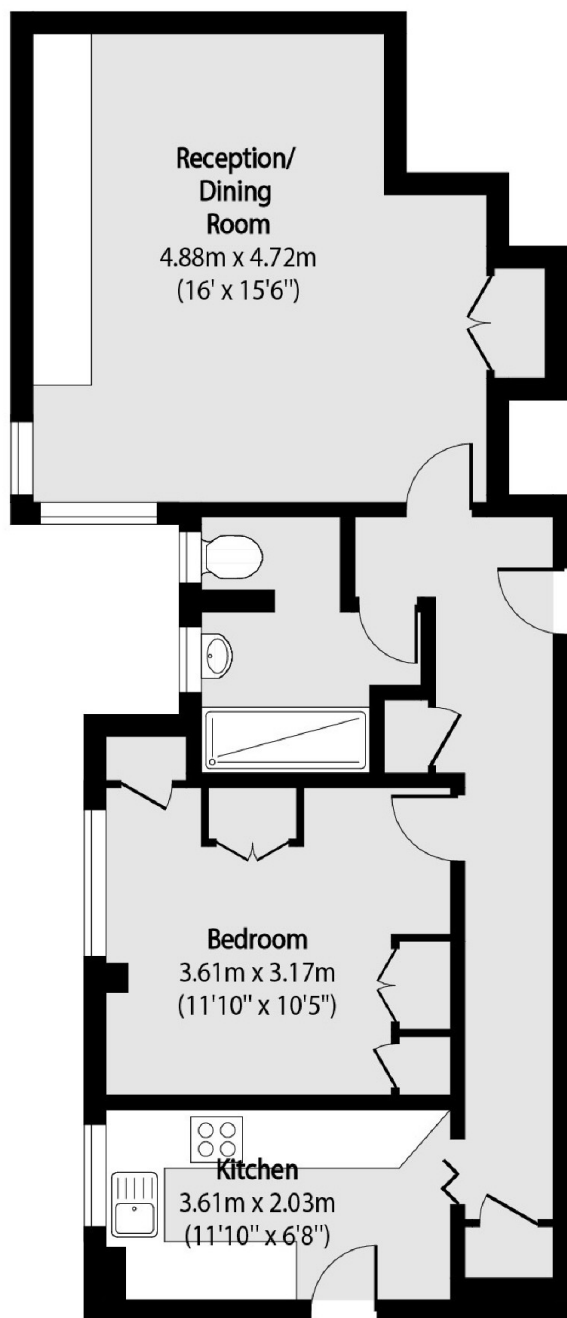
A ground floor flat set in a prime purpose-built block in the heart of Maida Vale. This property comes complete with a double bedroom with built-in wardrobes, separate kitchen and a spacious reception room.

Hamilton Court is ideally situated moments from Maida Vale underground station (Bakerloo line) and all of the local shops and cafes as well as being within walking distance of Little Venice and St John's Wood.

Features

- Ground Floor Flat
- Double Bedroom
- Separate Kitchen
- Purpose-Built Block
- Prime Maida Vale
- Chain Free

Maida Vale, Maida Vale, W9



Total area (approx): 57.79 sq m (622 sq. ft)