

Walerton Road, W9

£525,000

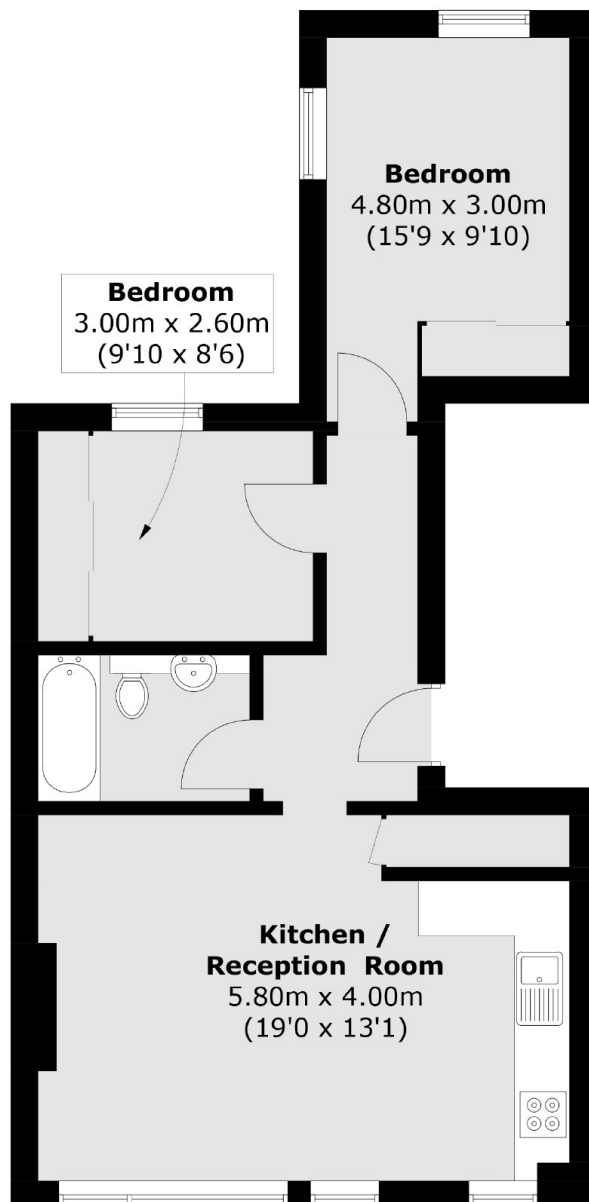
A first floor flat set in a charming Victorian conversion. This property comes complete with two double bedrooms, an open plan kitchen/reception and large sash windows throughout.

Walerton Road is a residential road within walking distance of Paddington Recreation Ground, a vast variety of amenities along Harrow Road and Shirland Road including an array of transport links into Central London.

Features

- First Floor Flat
- Victorian Conversion
- Two Double Bedrooms
- Open Plan Kitchen/Reception
- Great Location
- Chain Free

Walterton Road, Maida Vale, W9



Total area (approx.): 51.1 sq. m (550.0 sq. ft)