

## Bradiston Road, W9

### £525,000

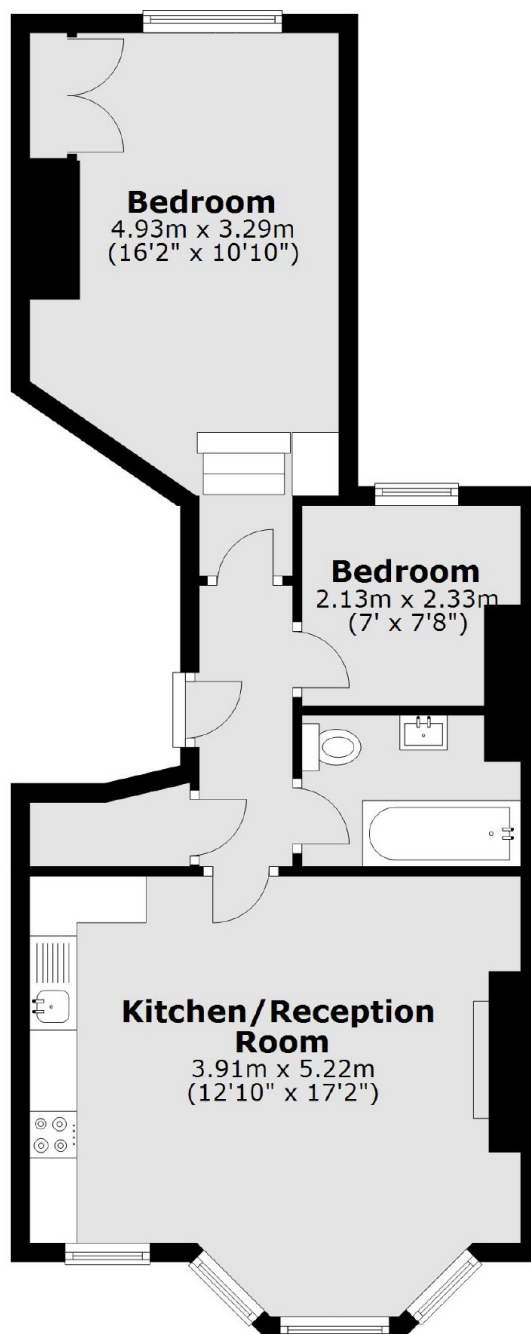
A well-presented first floor flat set in a Victorian conversion. This property comes complete with two bedrooms, an open plan kitchen/reception with a large bay window, a modern bathroom and is available with a share of freehold.

Bradiston Road is a tree-lined residential road just off Saltram Crescent. It is ideally located for all local amenities including a vast array of shops, cafés and transport links, including Maida Vale underground station and Queen's Park underground and overground station (Bakerloo, Mildmay and Lioness lines).

### Features

- Two Bedrooms
- First Floor Flat
- Open Plan Reception/Kitchen
- Good Condition
- Share Of Freehold
- Chain Free

# Bradiston Road, Maida Vale, W9



Total area: approx. 52.4 sq. metres (564.3 sq. feet)