



Warrington Crescent, W9

£695,000

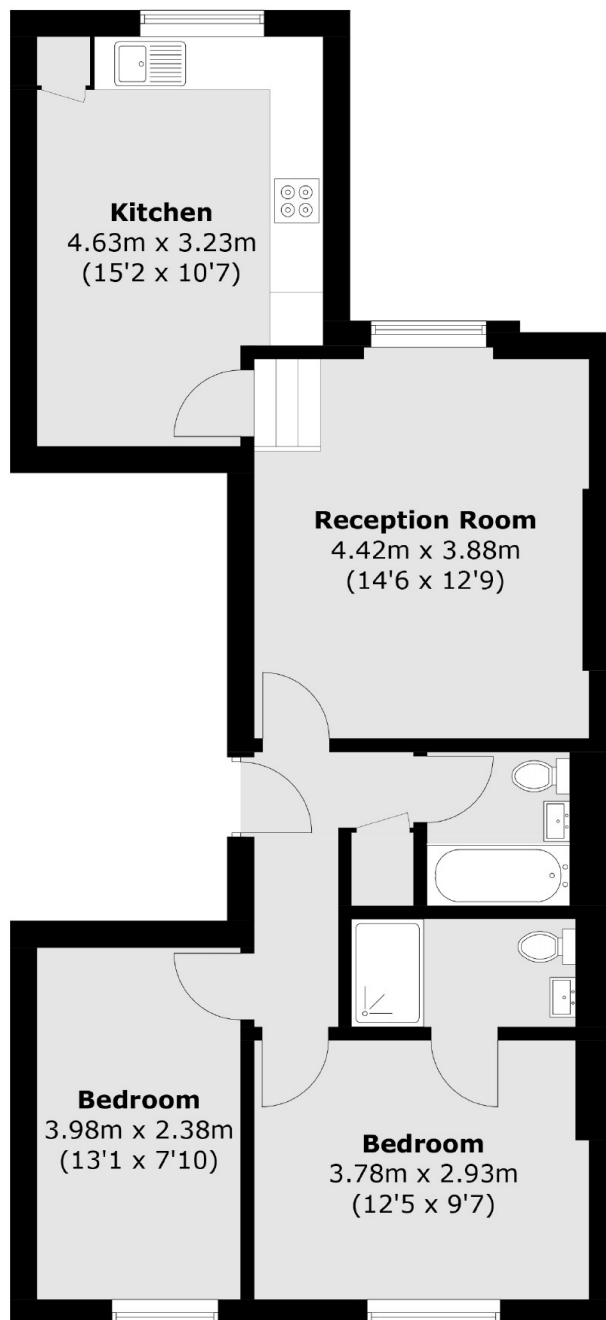
A well-presented third floor flat set in a stunning white stucco-fronted period conversion in Little Venice. This property comes complete with two double bedrooms, one of which features an en suite, separate eat-in kitchen and large sash windows throughout.

Warrington Crescent is one of Little Venice's most desirable locations, an elegant tree-lined street surrounded by period properties, with easy access to Warwick Avenue Underground station and a variety of shops, cafés, bars, and restaurants.

Features

- Third Floor Flat
- Two Double Bedrooms
- Two Bathrooms
- White Stucco-Fronted Building
- Separate Kitchen
- Fantastic Location

Warrington Crescent, Maida Vale, W9



Total area (approx.): 64.4 sq. m (693.2 sq. ft)

Dexters

Maida Vale
298 Elgin Avenue
London
W9 1JS
Sales
020 7266 2020

Energy Rating: D. We aim to make our particulars both accurate and reliable. However they are not guaranteed; nor do they form part of an offer or contract. If you require clarification on any points then please contact us, especially if you're traveling some distance to view. Please note that appliances and heating systems have not been tested and therefore no warranties can be given as to their good working order.

 **RICS** | Regulated
Estate Agent
and Letting Agent

[dexters.co.uk](https://www.dexters.co.uk)