



Warwick Avenue, W9

£1,846 Per week

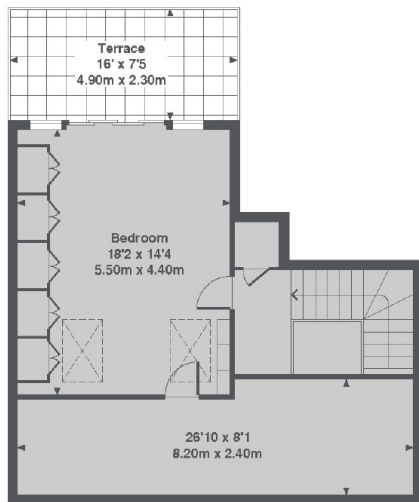
Located on Warwick Avenue in a Georgian Stucco fronted conversion is this four bedroom maisonette over three floors with a private roof terrace and access to communal gardens.

The property is ideally placed across the road from Warwick Avenue tube station alongside being just a short walk away from the canal and parade of shops along Clifton Gardens.

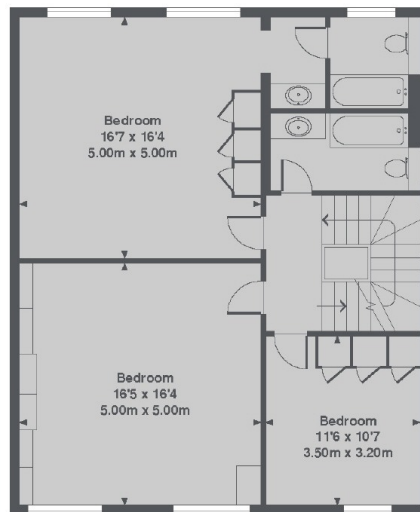
Features

- Four Double Bedrooms
- Two Bathrooms
- Split Level Maisonette
- Private Roof Terrace
- Communal Grounds
- Amazing Location

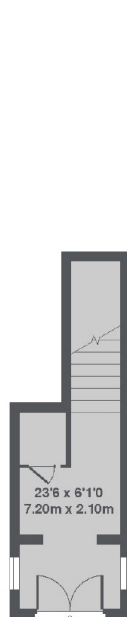
Warwick Avenue, London, W9



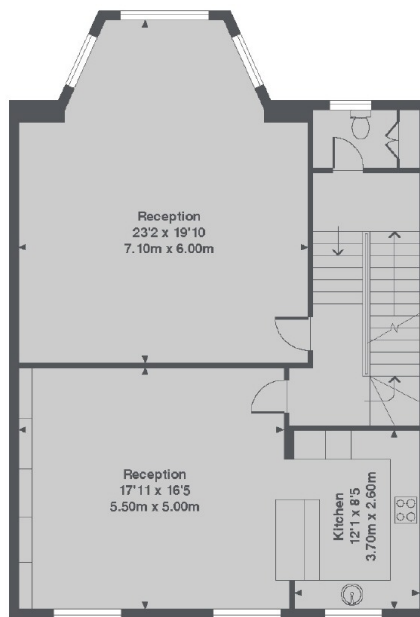
3rd Floor



2nd Floor



Ground Floor



1st Floor

Warwick Avenue, W9
Total Approx. Floor area 2596 Sq. Ft. (241.2 Sq. M.)

Dexters

Maida Vale
298 Elgin Avenue
London
W9 1JS
Lettings
020 7266 2021

Energy Rating: D. We aim to make our particulars both accurate and reliable. However they are not guaranteed; nor do they form part of an offer or contract. If you require clarification on any points then please contact us, especially if you're traveling some distance to view. Please note that appliances and heating systems have not been tested and therefore no warranties can be given as to their good working order.

 **RICS** | Regulated
Estate Agent
and Letting Agent

dexters.co.uk