

## Shirland Road, W9

£506 Per week

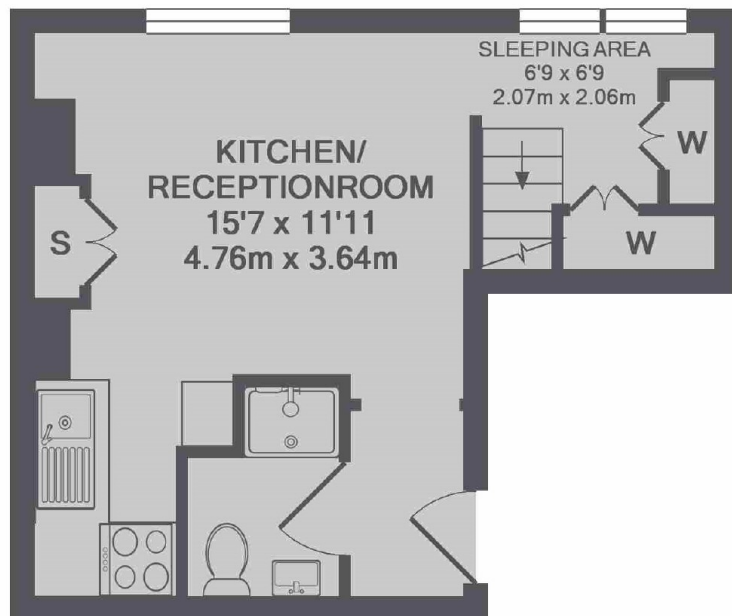
A beautifully presented studio apartment located on the top floor of a period conversion. The property provides an open plan kitchen/reception area, separate bedroom with storage underneath and smart shower room. Heating, Hot Water and Electricity is included in the rent.

Shirland Avenue is ideally located moments from Warwick Avenue tube station giving you quick access to the City and Central London. It is also located within easy reach of a number of local shops and cafés on Clifton Road.

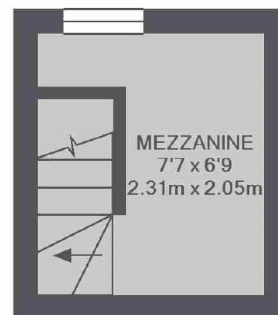
### Features

- Heating, Hot Water & Electricity included in the rent
- Recently Refurbished
- Modern Bathroom
- Separate sleeping area
- Ample storage
- Warwick Avenue Tube

# Shirland Road, Maida Vale, W9



2ND FLOOR



MEZZANINE FLOOR

TOTAL APPROX. FLOOR AREA 285 SQ.FT. (26.5 SQ.M.)