



Sutherland Avenue, W9

£807 Per week

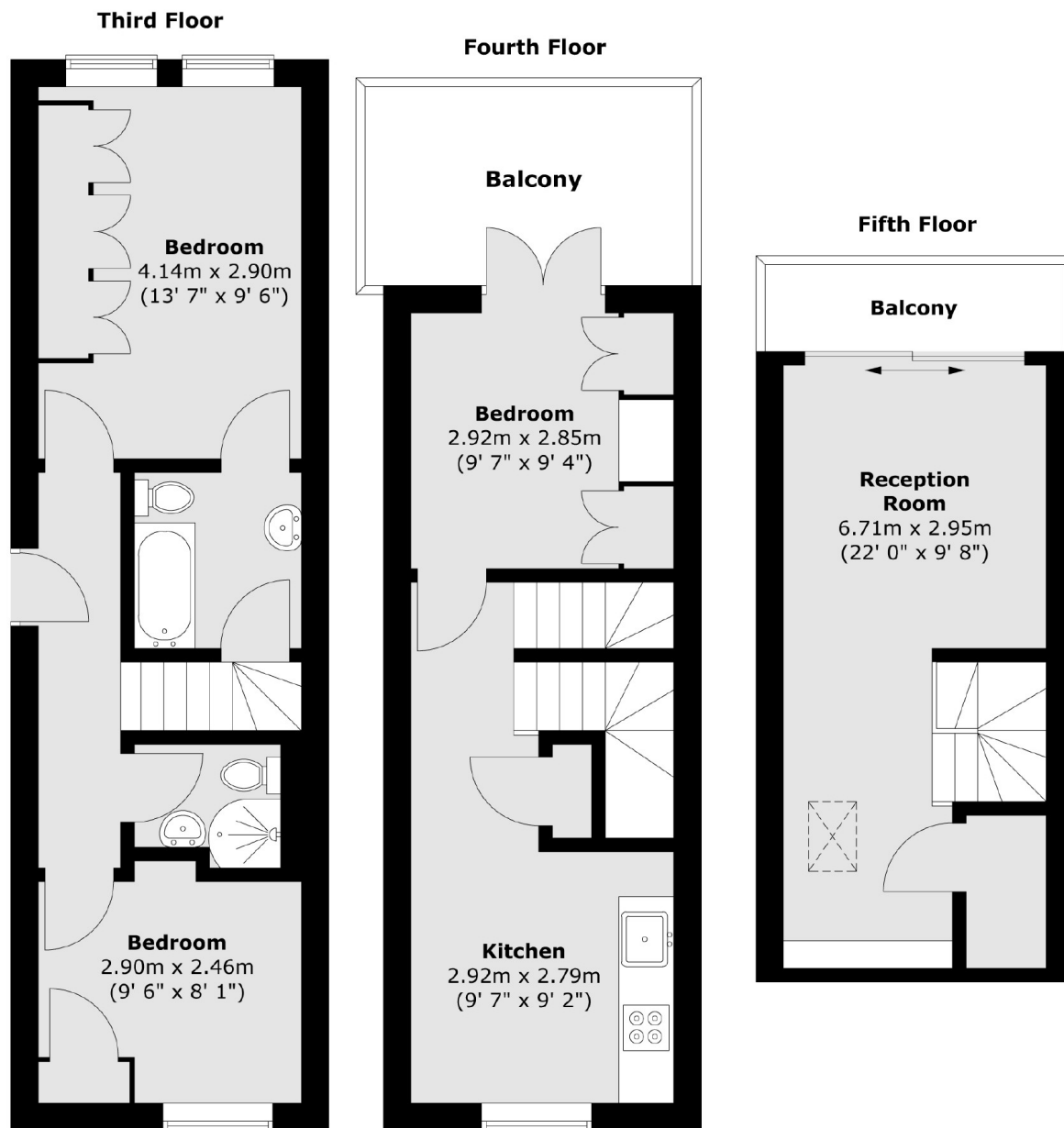
Modern split level flat situated over the third, fourth and fifth floor of a period conversion with three double bedrooms, two bathrooms and a large terrace and balcony space. The property also benefits from nearby local amenities in the desirable Little Venice amenities.

Sutherland Avenue is a tree line road in the heart of Maida Vale within half a mile of multiple transport links, Warwick Avenue, Clifton Gardens and Formosa Street.

Features

- Period Conversion
- Three Double Bedrooms
- Two Bathrooms
- Large Entertaining Space
- Private Balcony
- Split Level

Sutherland Avenue, Maida Vale, W9



Total area (approx.) : 78.7 sq. m (847 sq. ft)
Total balcony area (approx.) : 12.7 sq. m (137 sq. ft)