



Clifton Gardens, W9

£2,900,000

A stunning lateral penthouse set in a beautiful white stucco-fronted building. This well-presented property is in turnkey condition, and boasts high ceilings, an oval terrace, skylights throughout and a lift. It comes complete with three double bedrooms with built-in storage, three luxurious, black marble bathrooms and a sizable open plan kitchen/reception.

Clifton Gardens is a picturesque, tree-lined street, situated within close proximity of Warwick Avenue underground station (Bakerloo line), the canal in Little Venice and all other local amenities.

Features

- Lateral Penthouse
- Private Terrace
- Direct Lift Access
- Share of Freehold
- Air Conditioning
- Prime Little Venice

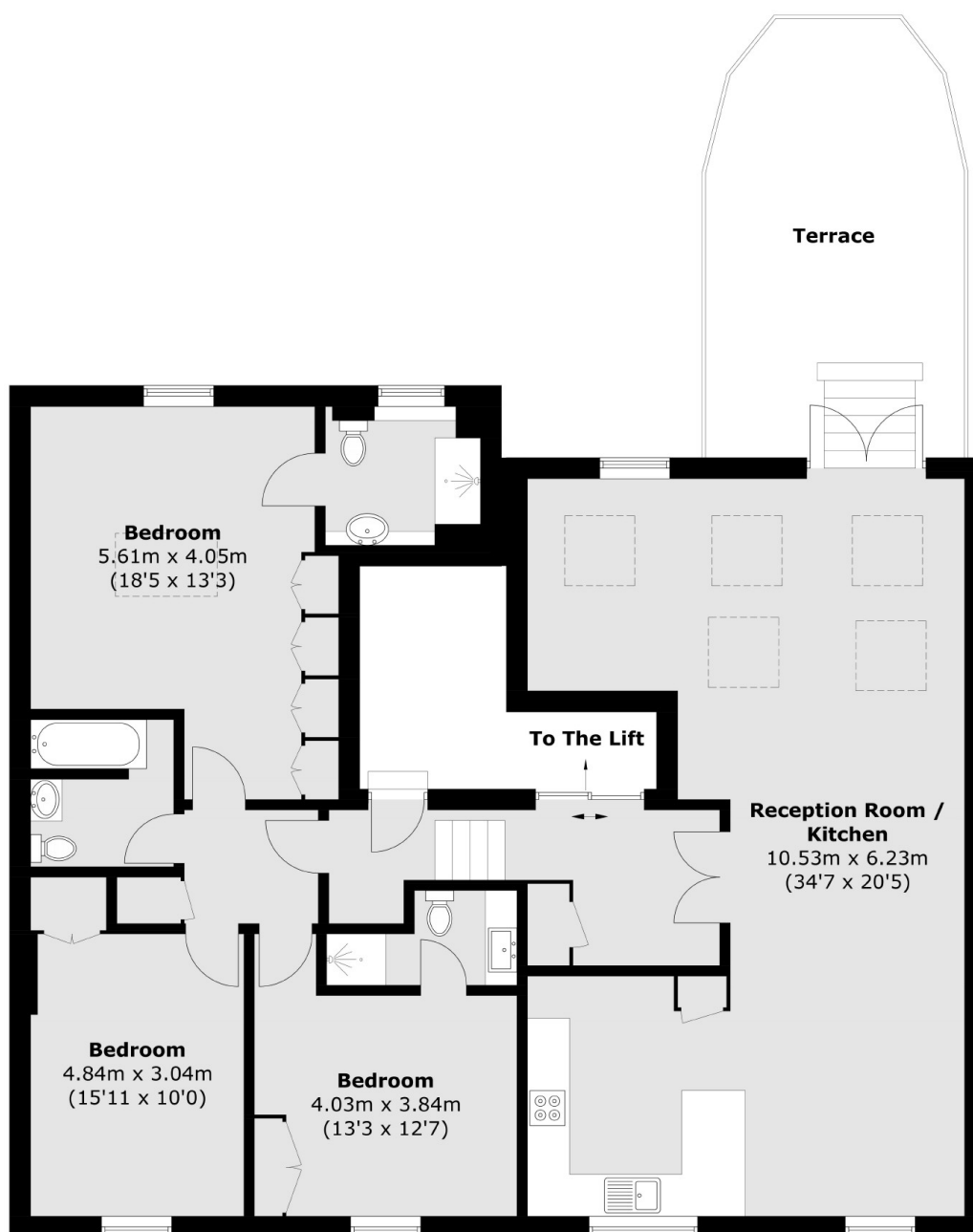


Clifton Gardens, W9

Located in one of Little Venice's most prized roads, this penthouse suite is a wonderful property with a spacious open-plan reception and access to terrace overlooking the landscaped communal gardens. This property boasts three double bedrooms with floor-to-ceiling built-in storage and wood flooring. Two of the bedrooms offer an all-marble en suite. There are several skylights throughout the property, as well as tall sash windows and high ceilings, making the property airy and bright.



Clifton Gardens, Maida Vale, W9



Total area (approx.): 132.4 sq. m (1,425.1 sq. ft)
Terrace: 21.6 sq. m (232.5 sq. ft)

Dexters

Maida Vale
298 Elgin Avenue
London
W9 1JS
Sales
020 7266 2020

Energy Rating: C. We aim to make our particulars both accurate and reliable. However they are not guaranteed; nor do they form part of an offer or contract. If you require clarification on any points then please contact us, especially if you're traveling some distance to view. Please note that appliances and heating systems have not been tested and therefore no warranties can be given as to their good working order.

 **RICS** | Regulated
Estate Agent
and Letting Agent

[dexters.co.uk](https://www.dexters.co.uk)