



Warwick Avenue, W9

£500,000

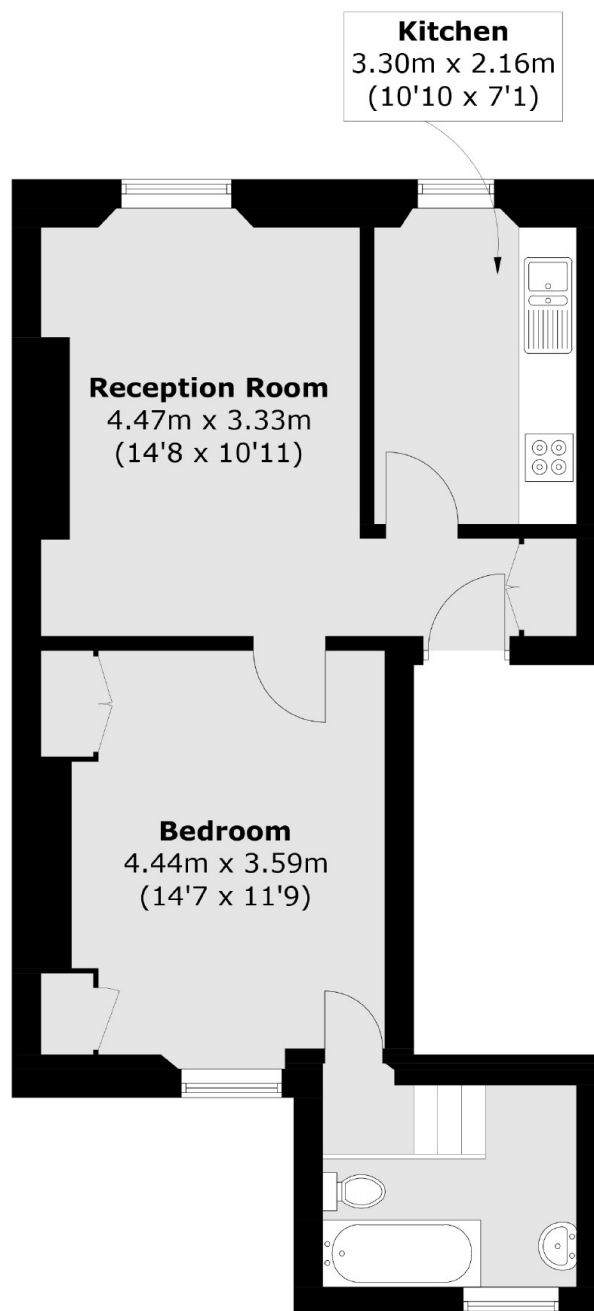
A second floor flat set in a period conversion. This property offers one double bedroom with built-in wardrobes, separate kitchen, large windows and high ceilings.

Situated in the heart of Little Venice, Warwick Avenue is across the road from Warwick Avenue underground station (Bakerloo line), and a short walk away from the canal, various shops along Clifton Road and Paddington station.

Features

- Share of Freehold
- Second Floor Flat
- Separate Kitchen
- High Ceilings
- Chain Free
- Fantastic Location

Warwick Avenue, Maida Vale, W9



Second Floor

Total area (approx.): 47.1 sq. m (506.9 sq. ft)

Dexters

Maida Vale
298 Elgin Avenue
London
W9 1JS
Sales
020 7266 2020

Energy Rating: D. We aim to make our particulars both accurate and reliable. However they are not guaranteed; nor do they form part of an offer or contract. If you require clarification on any points then please contact us, especially if you're traveling some distance to view. Please note that appliances and heating systems have not been tested and therefore no warranties can be given as to their good working order.

 **RICS** | Regulated
Estate Agent
and Letting Agent

[dexters.co.uk](https://www.dexters.co.uk)