



Maida Vale, W9

£519 Per week

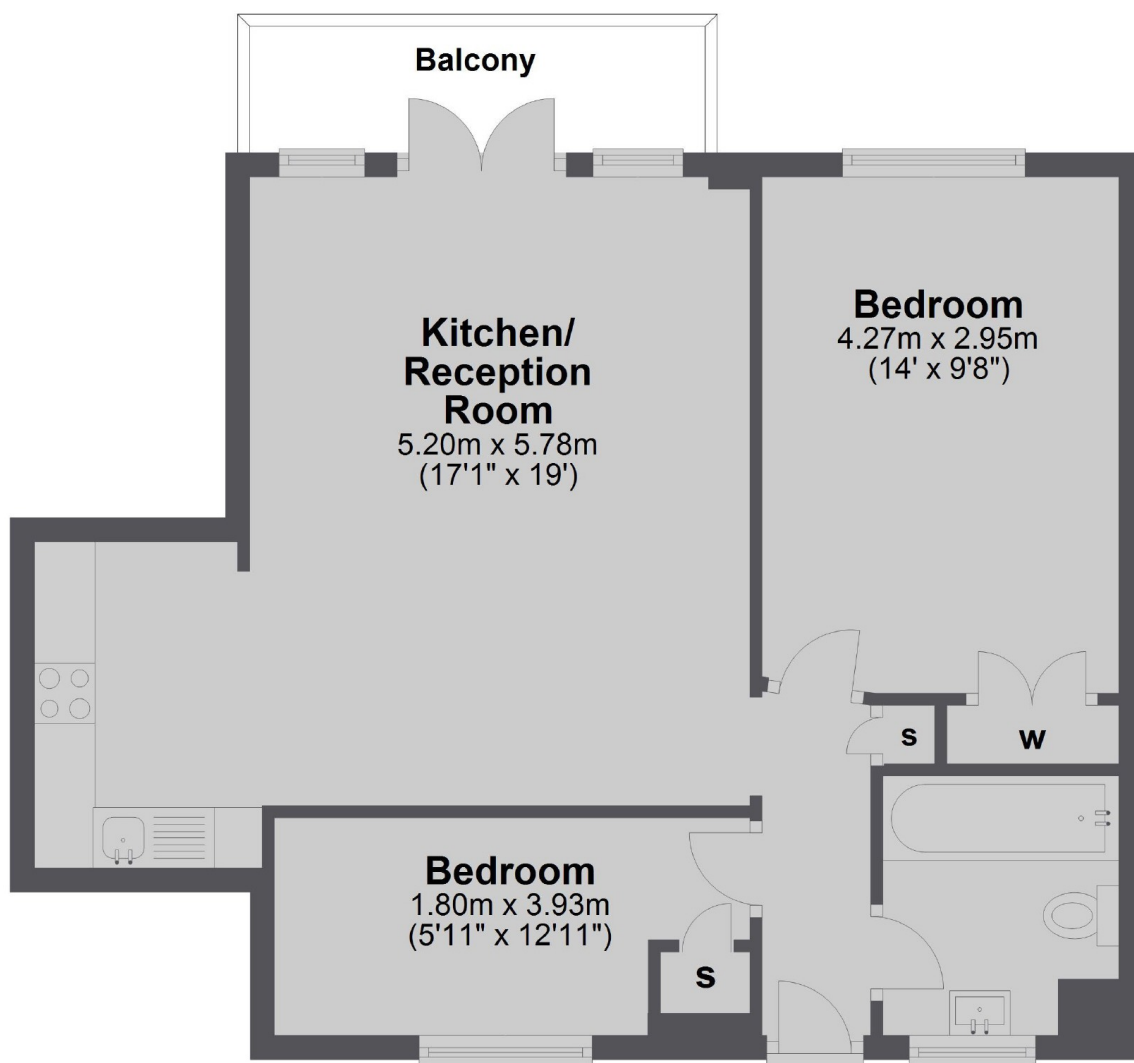
This newly refurbished fourth floor flat has a spacious semi open plan reception with a private balcony, two double bedrooms and a stylish bathroom suite. The heating and hot water is included in the rent.

Across the road from Maida Vale tube station, Wellesley Court is set back off Maida Vale road and provides fantastic access to the surrounding areas and into central London.

Features

- Purpose Built
- Newly Refurbished
- Fourth Floor Flat
- Two Bedrooms
- Open Plan Reception
- Great Location

Maida Vale, Maida Vale, W9



Total area: approx. 55.6 sq. metres (598.2 sq. feet)

Dexters

Maida Vale
298 Elgin Avenue
London
W9 1JS
Lettings
020 7266 2021

Energy Rating: C. We aim to make our particulars both accurate and reliable. However they are not guaranteed; nor do they form part of an offer or contract. If you require clarification on any points then please contact us, especially if you're traveling some distance to view. Please note that appliances and heating systems have not been tested and therefore no warranties can be given as to their good working order.

 **RICS** | Regulated
Estate Agent
and Letting Agent

[dexters.co.uk](https://www.dexters.co.uk)