



Elgin Avenue, W9

£925,000

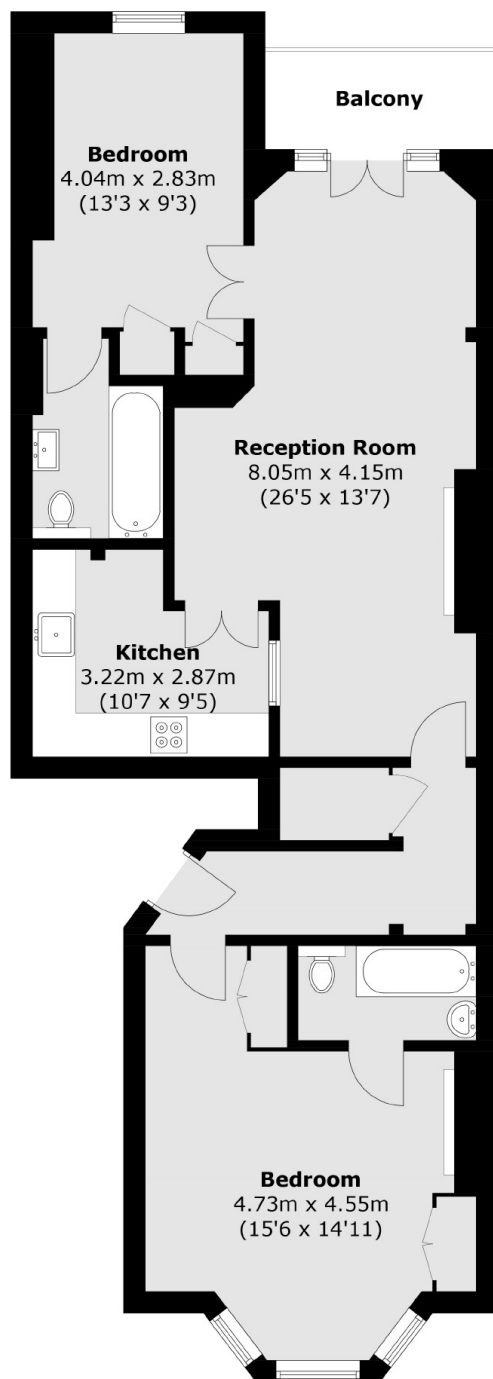
A spacious raised ground floor flat set in a Victorian conversion. This property boasts cornicing and feature fireplaces, and offers two double bedrooms with their own en suites, a bright reception room with space for a dining area and access to a balcony, separate kitchen and high ceilings throughout.

Elgin Avenue is a picturesque road in the heart of Maida Vale, within walking distance of Maida Vale underground station (Bakerloo line), Paddington Recreational Grounds and a number of local cafés, shops and restaurants.

Features

- Victorian Conversion
- Raised Ground Flat
- Two Double Bedrooms
- Private Balcony
- Chain Free
- Great Location

Elgin Avenue, Maida Vale, W9



Total area (approx.): 86.6 sq. m (932.1 sq. ft)
Balcony area (approx.): 4.2 sq. m (45.2 sq. ft)

Dexters

Maida Vale
298 Elgin Avenue
London
W9 1JS
Sales
020 7266 2020

Energy Rating: C. We aim to make our particulars both accurate and reliable. However they are not guaranteed; nor do they form part of an offer or contract. If you require clarification on any points then please contact us, especially if you're traveling some distance to view. Please note that appliances and heating systems have not been tested and therefore no warranties can be given as to their good working order.

 **RICS** | Regulated
Estate Agent
and Letting Agent

[dexters.co.uk](https://www.dexters.co.uk)