

Grantully Road, W9

£875,000

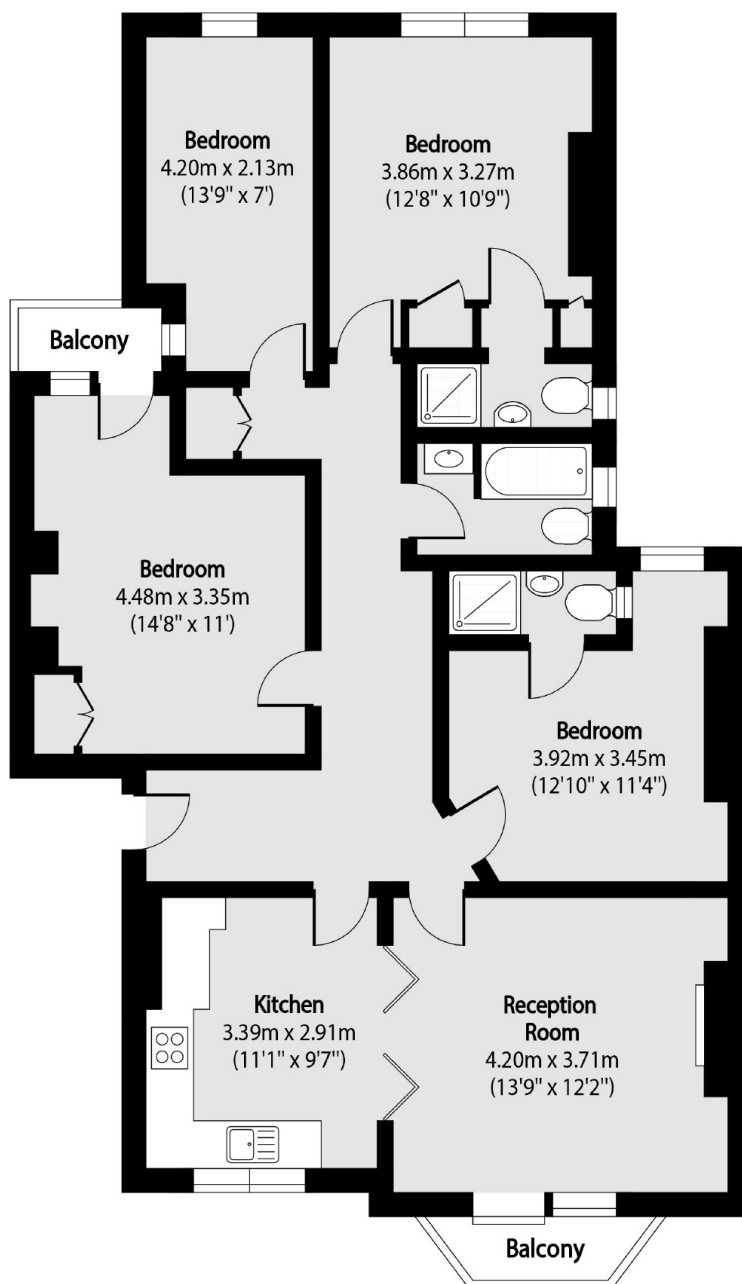
A third floor flat set in a charming red-brick mansion block in Maida Vale. This property offers four double bedrooms, an open plan kitchen/reception with access to one of the two balconies and high ceilings throughout.

Grantully Road is a quiet and tree-lined one way road, located opposite Paddington Recreation Ground. Less than a third of a mile away is Maida Vale Station and all the shops, cafés and amenities on Elgin Avenue.

Features

- Four Double Bedrooms
- Third Floor Flat
- Red-Brick Mansions Block
- Two Balconies
- Chain Free
- Great Location

Grantully Road, Maida Vale, W9



Total area (approx): 99.13 sq m (1067 sq. ft)

Balcony total area (approx): 3.28 sq m (35 sq. ft)

Dexters

Maida Vale
298 Elgin Avenue
London
W9 1JS
Sales
020 7266 2020

Energy Rating: D. We aim to make our particulars both accurate and reliable. However they are not guaranteed; nor do they form part of an offer or contract. If you require clarification on any points then please contact us, especially if you're traveling some distance to view. Please note that appliances and heating systems have not been tested and therefore no warranties can be given as to their good working order.

 **RICS** | Regulated
Estate Agent
and Letting Agent

[dexters.co.uk](https://www.dexters.co.uk)