



Maida Vale, W9

£425,000

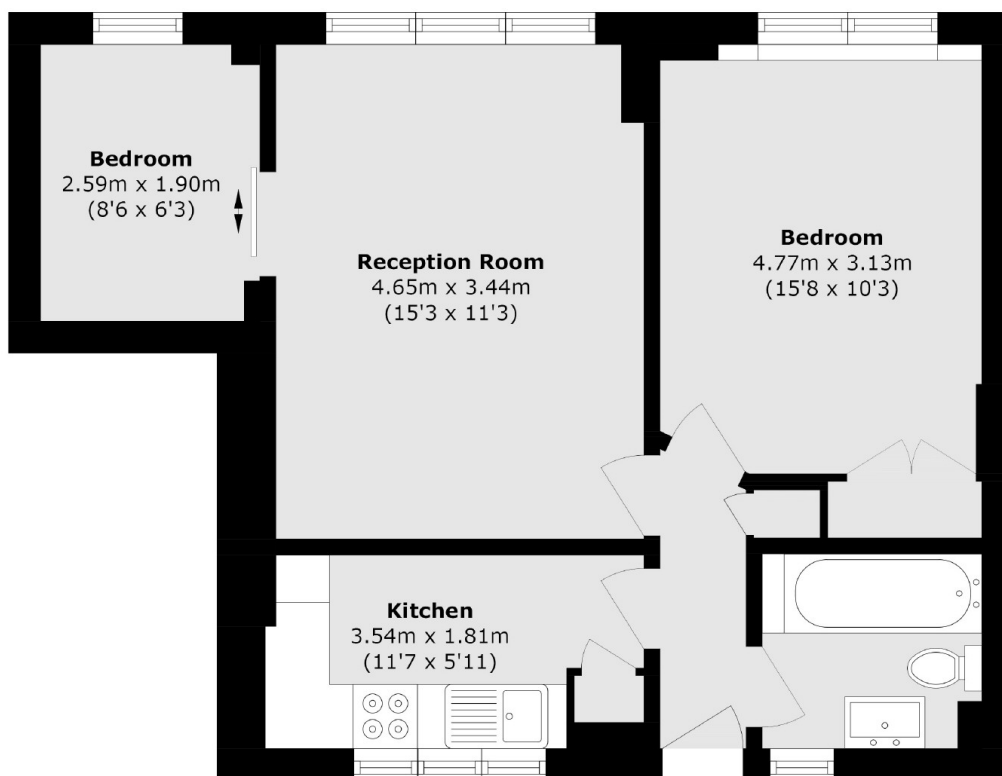
A first floor flat set in a modern purpose-built block. This property comes complete with two bedrooms, separate kitchen, parking and access to a lift and porter.

Wellesley Court is on the cusp of Maida Vale and St. John's Wood and less than 600 ft from multiple transport links and local amenities, providing fantastic access to the surrounding areas and into central London.

Features

- First Floor Flat
- Two Bedrooms
- Separate Kitchen
- Porter & Lift
- Parking
- Great Transport Links

Maida Vale, Maida Vale, W9



Total area (approx.): 49.1 sq. m (528.5 sq. ft)