



Widley Road, W9

£576 Per week

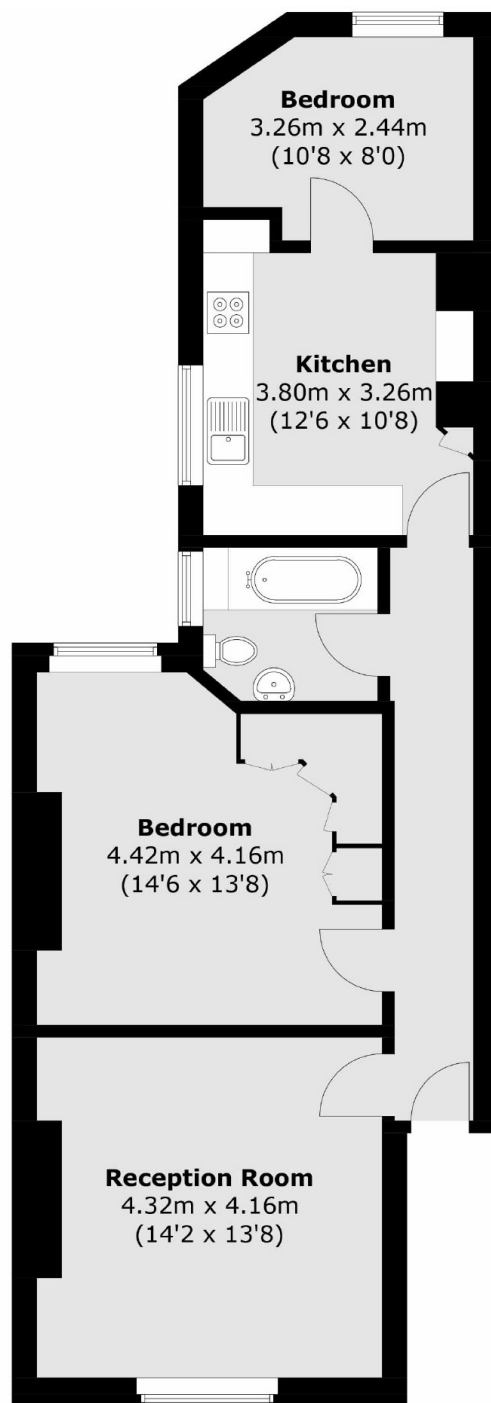
Located on the first floor of this property mansion block, the property comprises large double bedroom with ample storage, contemporary tiled bathroom and a superb spacious kitchen. Further features include communal gardens, period features, modern bathroom, high spec kitchen appliances.

Widley Road is located just off Elgin Avenue and around the corner from Paddington recreational grounds. It offers easy access to the shops, cafes and transport links of Maida Vale, Queens Park and Warwick Avenue.

Features

- Mansion Block
- Two Bedroom
- Great Location
- Modern Bathroom
- Spacious Apartment
- Communal Garden

Widley Road, Maida Vale, W9



Total area (approx.): 66.3 sq. m (713.6 sq. ft)

Dexters

Maida Vale
298 Elgin Avenue
London
W9 1JS
Lettings
020 7266 2021

Energy Rating: C. We aim to make our particulars both accurate and reliable. However they are not guaranteed; nor do they form part of an offer or contract. If you require clarification on any points then please contact us, especially if you're traveling some distance to view. Please note that appliances and heating systems have not been tested and therefore no warranties can be given as to their good working order.

 **RICS** | Regulated
Estate Agent
and Letting Agent

[dexters.co.uk](https://www.dexters.co.uk)