



Lauderdale Road, W9

£950,000

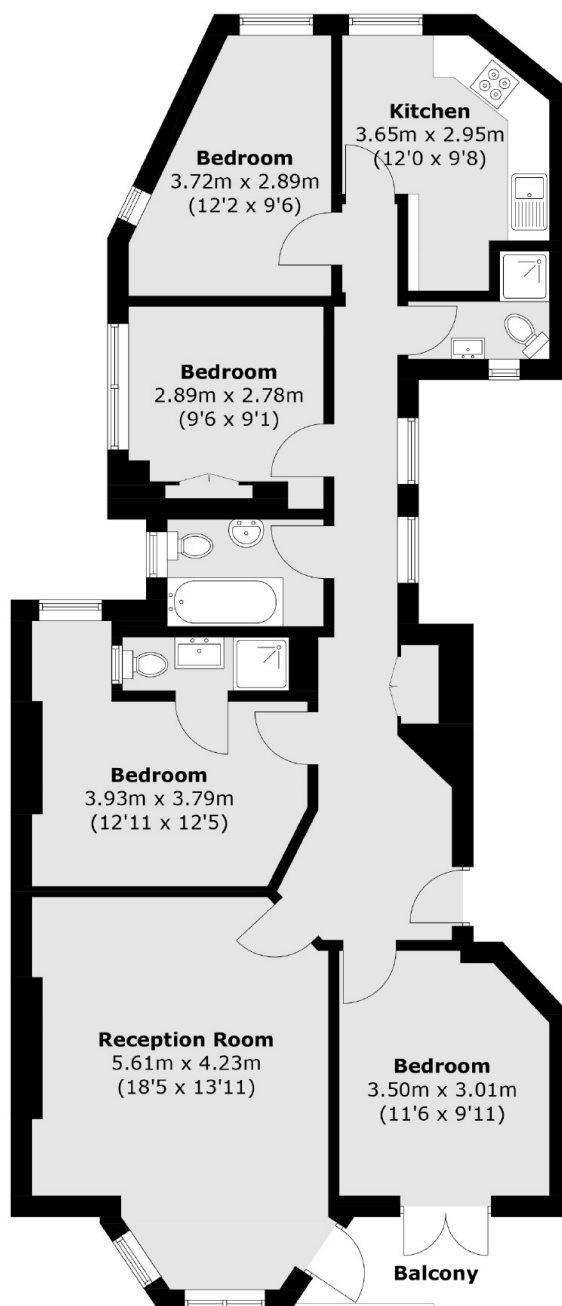
A charming first floor flat set in one of Maida Vale's iconic red brick mansion blocks. The property offers of four bedrooms, a spacious reception room with a bay window and access to the balcony and a separate kitchen. This property is being offered chain free.

Lauderdale Road is within walking distance of both Maida Vale and Warwick Avenue underground stations (Bakerloo line), the canal in Little Venice and the amenities along Clifton Gardens.

Features

- Four Bedrooms
- First Floor Flat
- Red Brick Mansion Block
- Separate Kitchen
- Fantastic Location
- Chain Free

Lauderdale Road, Maida Vale, W9



Total area (approx.): 94.6 sq. m (1,018.2 sq. ft)
Total area (approx.): 4.4 sq. m (47.3 sq. ft)