



Lauderdale Road, W9

£900,000

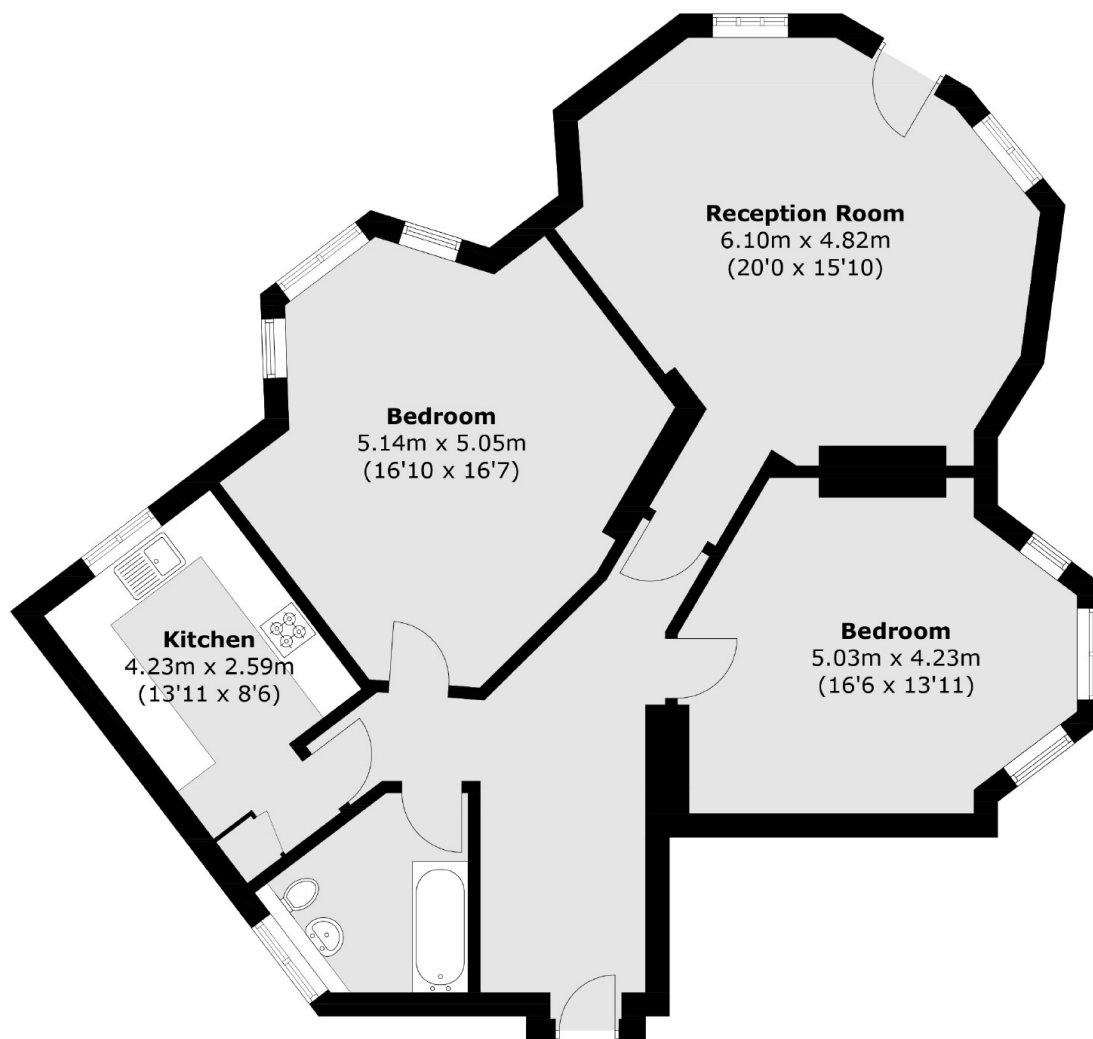
A spacious lower ground floor flat set in a charming red brick mansion block in Maida Vale. The property offers of two double bedrooms, a large reception room with a door leading out to the communal gardens and a separate kitchen. This property is being offered chain free.

Lauderdale Road is within walking distance of both Maida Vale and Warwick Avenue underground stations (Bakerloo line), the canal in Little Venice and the amenities along Clifton Gardens.

Features

- Two Double Bedrooms
- Private Entrance
- Red Brick Mansion Block
- Separate Kitchen
- Fantastic Location
- Chain Free

Lauderdale Road, Maida Vale, W9



Total area (approx.): 98.1 sq. m (1,055.9 sq. ft)

Dexters

Maida Vale
298 Elgin Avenue
London
W9 1JS
Sales
020 7266 2020

Energy Rating: D. We aim to make our particulars both accurate and reliable. However they are not guaranteed; nor do they form part of an offer or contract. If you require clarification on any points then please contact us, especially if you're traveling some distance to view. Please note that appliances and heating systems have not been tested and therefore no warranties can be given as to their good working order.

 **RICS** | Regulated
Estate Agent
and Letting Agent

dexters.co.uk