



Elgin Avenue, W9

£1,050,000

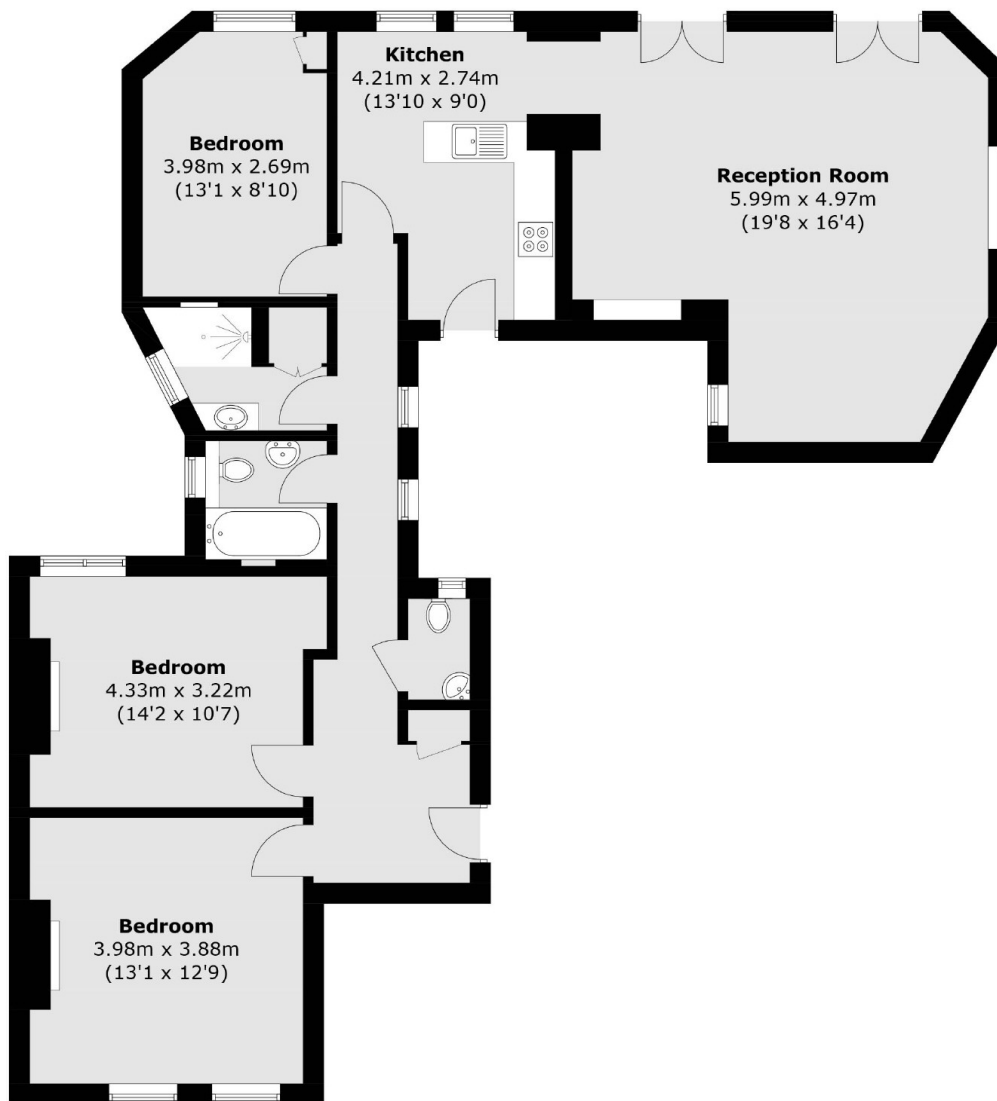
A spacious lower ground floor flat in one of Maida Vale's most charming red-brick mansions. This property comes complete with three bedrooms, semi-open plan kitchen/reception perfect for hosting family and friends, two bathrooms and an additional WC. This apartment has direct access to the communal gardens and large sash windows throughout.

Biddulph Mansions is situated on charming, tree-lined street Elgin Avenue, perfectly positioned just moments away from the open spaces and sports facilities of Paddington Recreation Ground. Additionally, it is close to the shops, cafés, and restaurants along Lauderdale Parade, as well as Maida Vale underground station (Bakerloo line).

Features

- Red-Brick Mansion
- Direct Access to Communal
- Share Of Freehold
- Two Bathrooms
- Chan Free
- Fantastic Location

Elgin Avenue, Maida Vale, W9



Total area (approx.): 108.9 sq. m (1,172.1 sq. ft)

Dexters

Maida Vale
298 Elgin Avenue
London
W9 1JS
Sales
020 7266 2020

Energy Rating: D. We aim to make our particulars both accurate and reliable. However they are not guaranteed; nor do they form part of an offer or contract. If you require clarification on any points then please contact us, especially if you're traveling some distance to view. Please note that appliances and heating systems have not been tested and therefore no warranties can be given as to their good working order.

 **RICS** | Regulated
Estate Agent
and Letting Agent

[dexters.co.uk](https://www.dexters.co.uk)