



Shirland Road, W9

£484 Per week

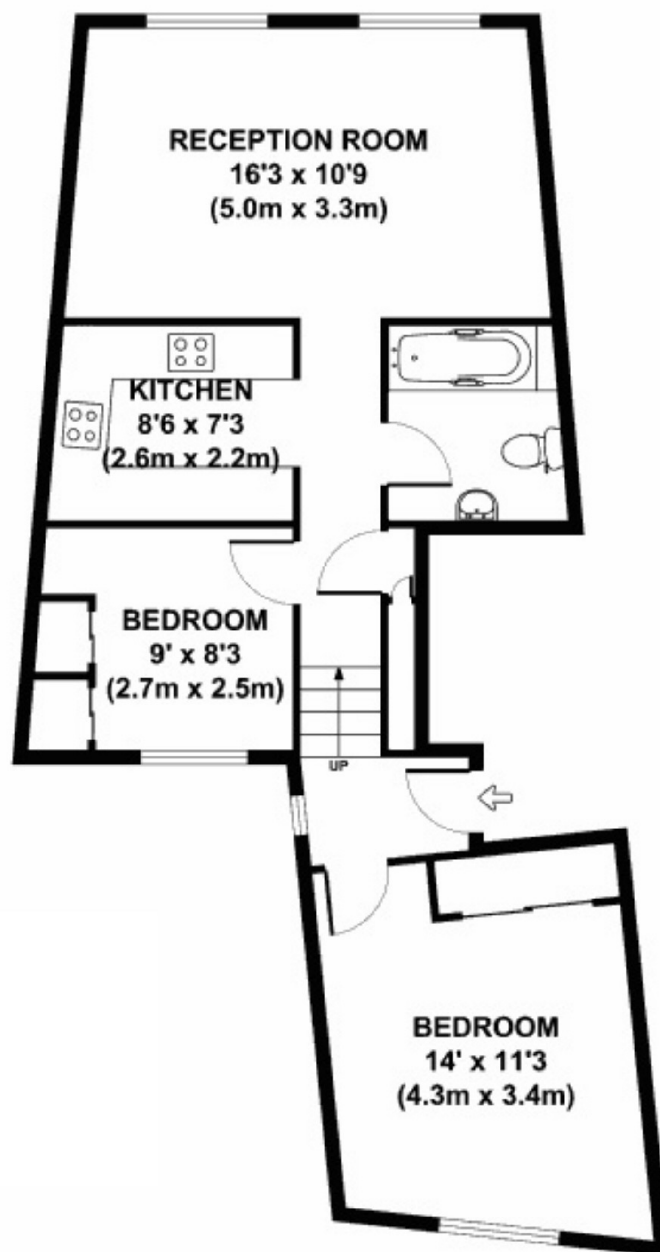
Newly renovated, this spacious two bedroom flat has a reception room with wooden flooring, a smart semi-open-plan kitchen, two bedrooms and a contemporary bathroom.

Shirland Road provides a variety of amenities and is close to a selection of shops, bars and restaurants both in Maida Vale and Queens Park as well as the open spaces of the Paddington Recreation Grounds.

Features

- First Floor Flat
- Newly Renovated
- Two Double Bedrooms
- Contemporary Bathroom
- Modern Kitchen
- Great location

Shirland Road, Maida Vale, W9



**FIRST FLOOR
GROSS INTERNAL
FLOOR AREA 621 SQ FT**

APPROX. GROSS INTERNAL FLOOR AREA 621 SQ FT / 57 SQ M

Dexters

Maida Vale
298 Elgin Avenue
London
W9 1JS
Lettings
020 7266 2021

Energy Rating: E. We aim to make our particulars both accurate and reliable. However they are not guaranteed; nor do they form part of an offer or contract. If you require clarification on any points then please contact us, especially if you're traveling some distance to view. Please note that appliances and heating systems have not been tested and therefore no warranties can be given as to their good working order.

 **RICS** | Regulated
Estate Agent
and Letting Agent

[dexters.co.uk](https://www.dexters.co.uk)