



## Fordingley Road, W9

£346 Per week

Recently refurbished, this top floor two bedroom flat has an open-plan kitchen / reception room, two good sized double bedrooms (one offering access to a private rear roof terrace) and a contemporary shower room.

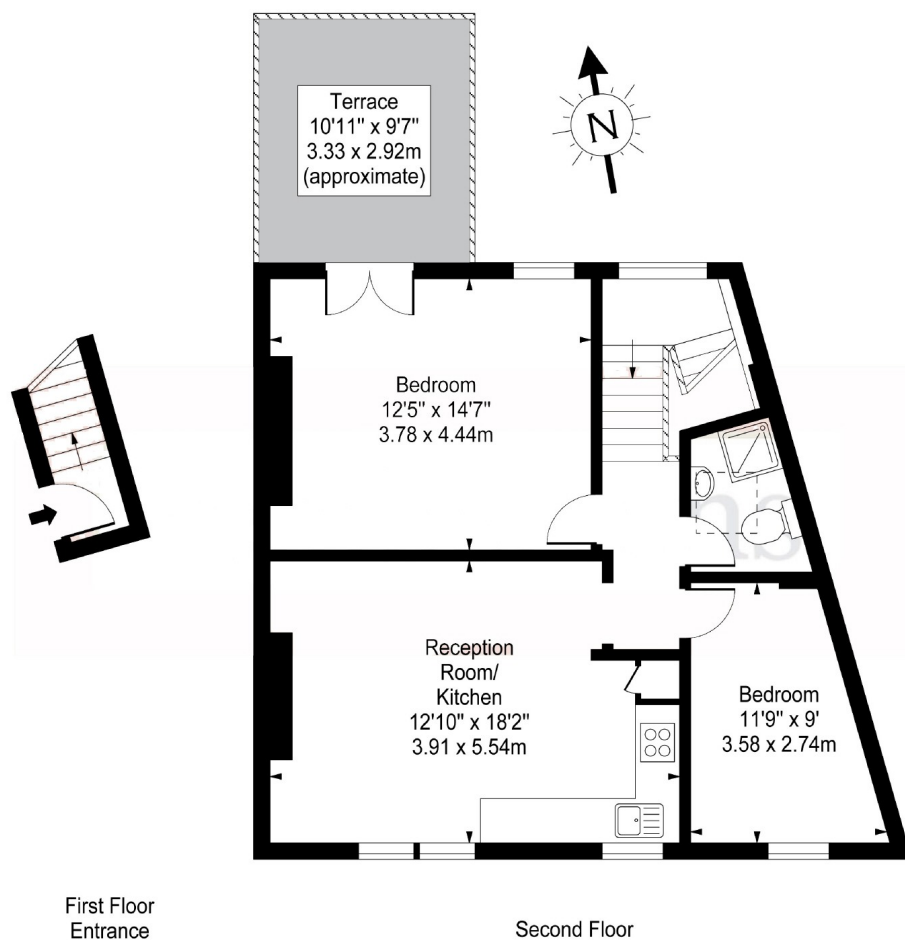
The property is ideally located on a quiet residential street a short walk from Queens Park and Maida Vale providing easy access to the local bars, cafes and shops of Salusbury Road and the Farmer's Market on a Sunday.

### Features

Period Conversion  
Top Floor Flat  
Two Bedrooms  
Open-Plan  
Private Roof Terrace  
Great Location

## Fordingley Road, Maida Vale, W9

### Fordingley Road, Maida Vale, W9



Approx Gross Internal Area **643 Sq Ft - 59.73 Sq M**

For Illustration Purposes Only - Not To Scale  
Copyrights by Pembertons  
Ref: No. 1868

### Contact

To arrange a viewing call our office on the number below or visit our website.



Energy Rating: D. We aim to make our particulars both accurate and reliable. However they are not guaranteed; nor do they form part of an offer or contract. If you require clarification on any points then please contact us, especially if you're traveling some distance to view. Please note that appliances and heating systems have not been tested and therefore no warranties can be given as to their good working order.