



## Elgin Avenue, W9

### £950,000

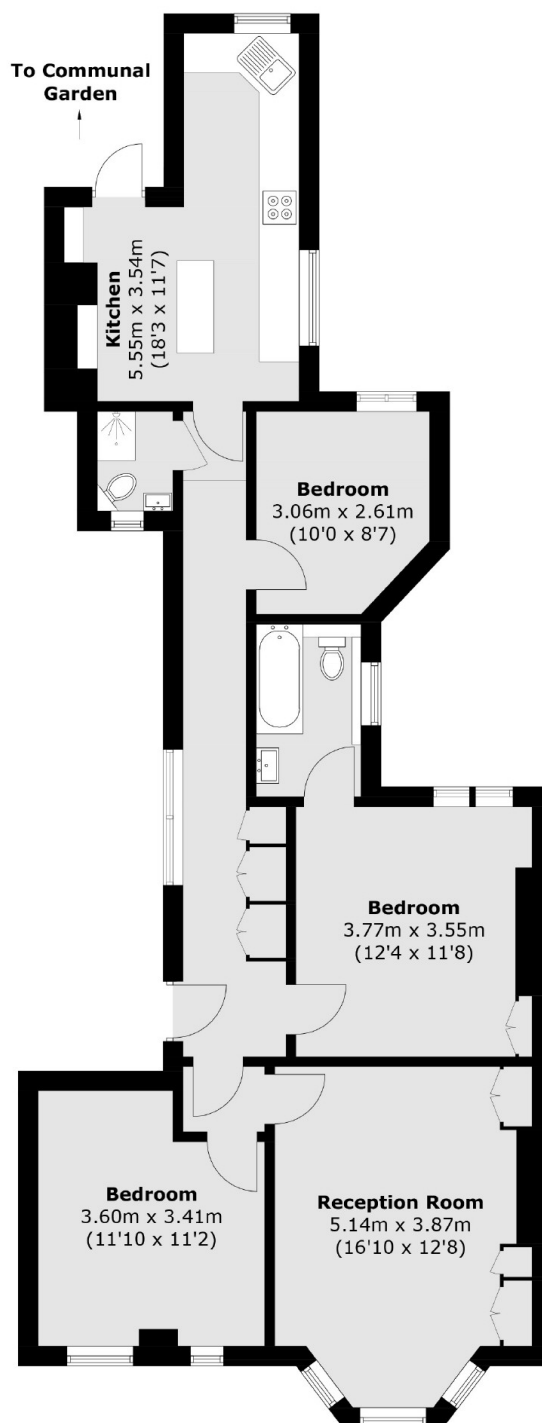
A spacious lower ground floor flat set in one of Maida Vale's iconic red-brick mansions. The property features three double bedrooms, one of which comes with an en-suite, a separate modern kitchen with direct access to beautiful communal gardens, a bright reception room with a bay window and high ceilings throughout.

Biddulph Mansions is situated on charming, tree-lined Elgin Avenue, perfectly positioned just moments away from the open spaces and sports facilities of Paddington Recreation Ground. Additionally, it is close to a variety of different shops, cafés, and restaurants on Lauderdale Parade, as well as Maida Vale Underground station on the Bakerloo Line.

### Features

- Red-Brick Mansion Block
- Direct Access to Communal
- Three Double Bedrooms
- Two Bathrooms
- High Ceilings
- Long Lease

# Elgin Avenue, Maida Vale, W9



Total area (approx.): 88.2 sq. m (949.3 sq. ft)

## Dexters

Maida Vale  
298 Elgin Avenue  
London  
W9 1JS  
Sales  
020 7266 2020

Energy Rating: . We aim to make our particulars both accurate and reliable. However they are not guaranteed; nor do they form part of an offer or contract. If you require clarification on any points then please contact us, especially if you're traveling some distance to view. Please note that appliances and heating systems have not been tested and therefore no warranties can be given as to their good working order.

 **RICS** | Regulated  
Estate Agent  
and Letting Agent

[dexters.co.uk](https://www.dexters.co.uk)