



Admiral Walk, W9

£525,000

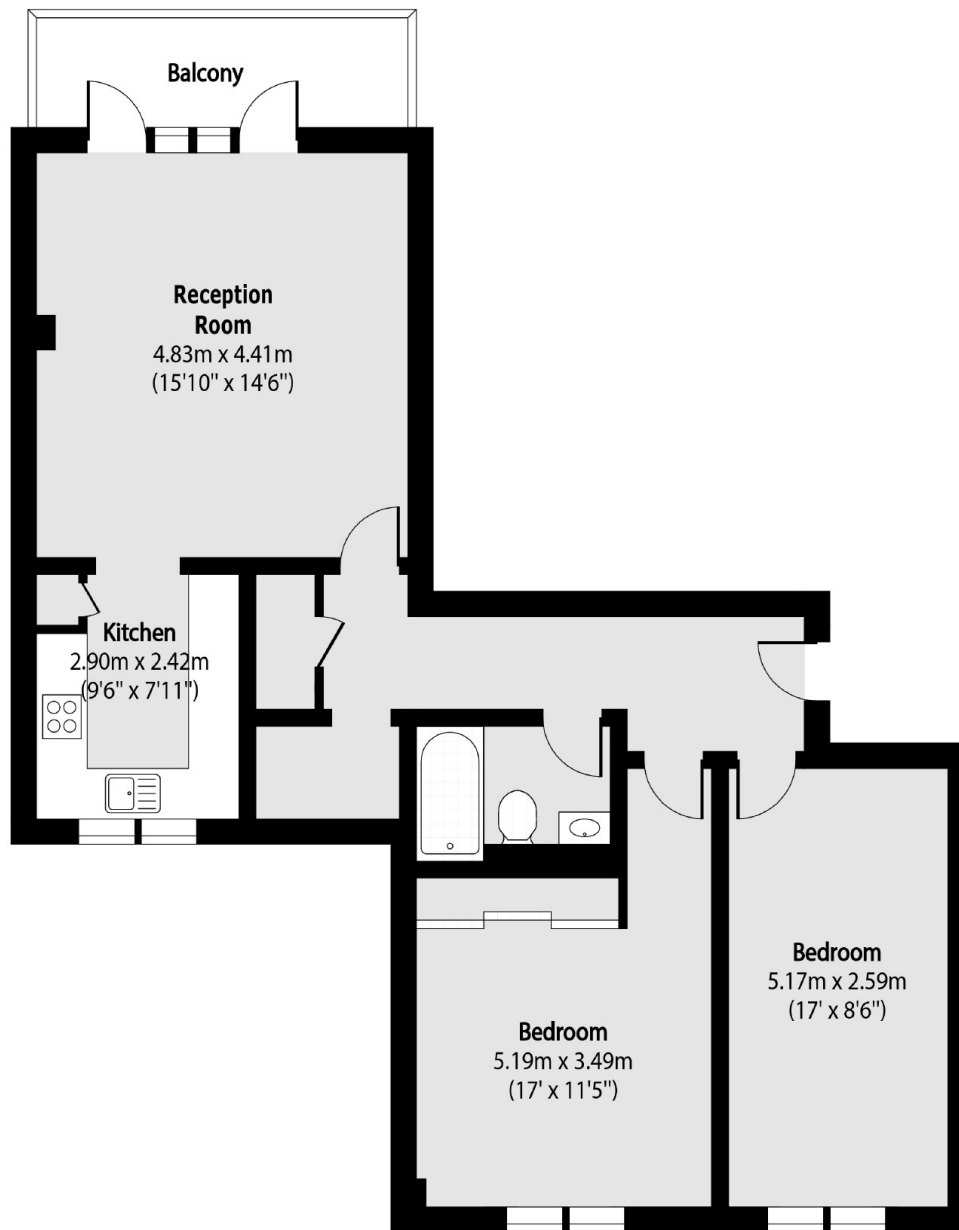
A fourth floor flat set in a purpose-built block. This property offers two double bedrooms, separate kitchen and a reception with access to a private balcony. This property comes with a parking space and is being offered chain free.

Conveniently situated within walking distance of Royal Oak, Westbourne Terrace, and Warwick Avenue stations, this location offers easy access to the local amenities of Maida Vale, Paddington and the West End. The charming canals and scenic surroundings of Little Venice are also nearby.

Features

- Purpose-Built Block
- Two Double Bedrooms
- Separate Kitchen
- Balcony
- Parking
- Chain Free

Admiral Walk, Maida Vale, W9



Total area (approx): 76.04 sq m (818 sq. ft)

Balcony total area (approx): 5.72 sq m (62 sq. ft)

Dexters

Maida Vale
298 Elgin Avenue
London
W9 1JS
Sales
020 7266 2020

Energy Rating: C. We aim to make our particulars both accurate and reliable. However they are not guaranteed; nor do they form part of an offer or contract. If you require clarification on any points then please contact us, especially if you're traveling some distance to view. Please note that appliances and heating systems have not been tested and therefore no warranties can be given as to their good working order.

 **RICS** | Regulated
Estate Agent
and Letting Agent

[dexters.co.uk](https://www.dexters.co.uk)