

## Shirland Road, W9

### £400,000

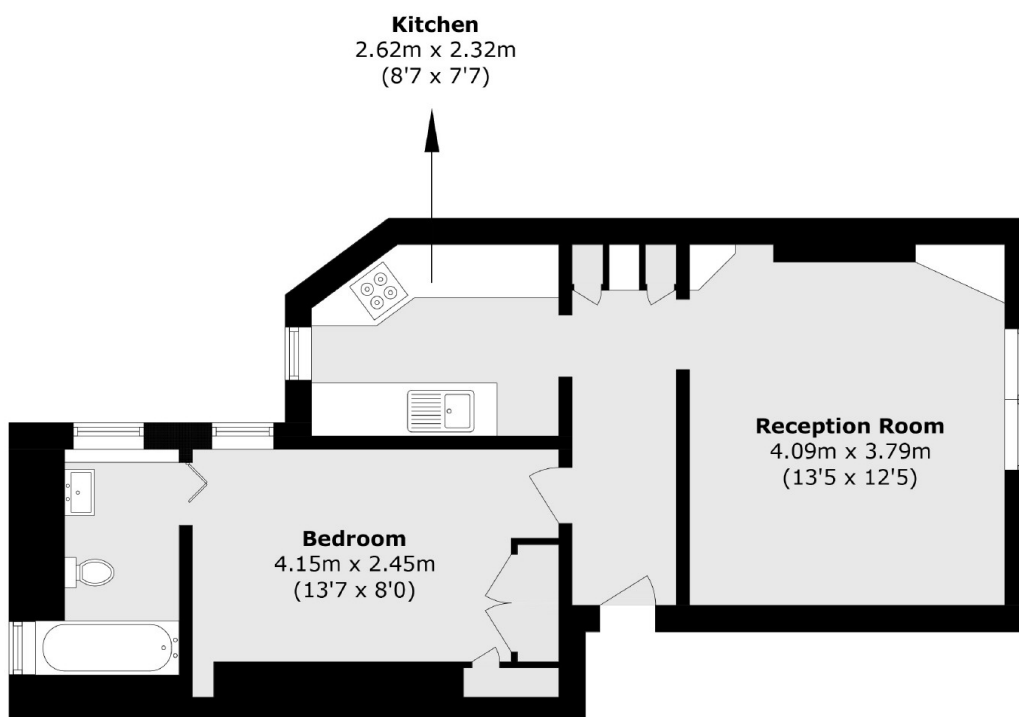
A welcoming third floor flat set in a purpose-built block. This property features a double bedroom with built-in storage and en suite, a separate kitchen and sash windows throughout.

Shirland Road is within walking distance of Paddington Recreation Ground, various shops and restaurants, and the transport links of both Maida Vale and Warwick Avenue.

### Features

- Purpose-Built Block
- Share of Freehold
- One Double Bedroom
- Separate Kitchen
- Gated Entrance
- Good Location

# Shirland Road, Maida Vale, W9



Total area (approx.): 43.4 sq. m (467.1 sq. ft)