



Malvern Road, NW6

£475,000

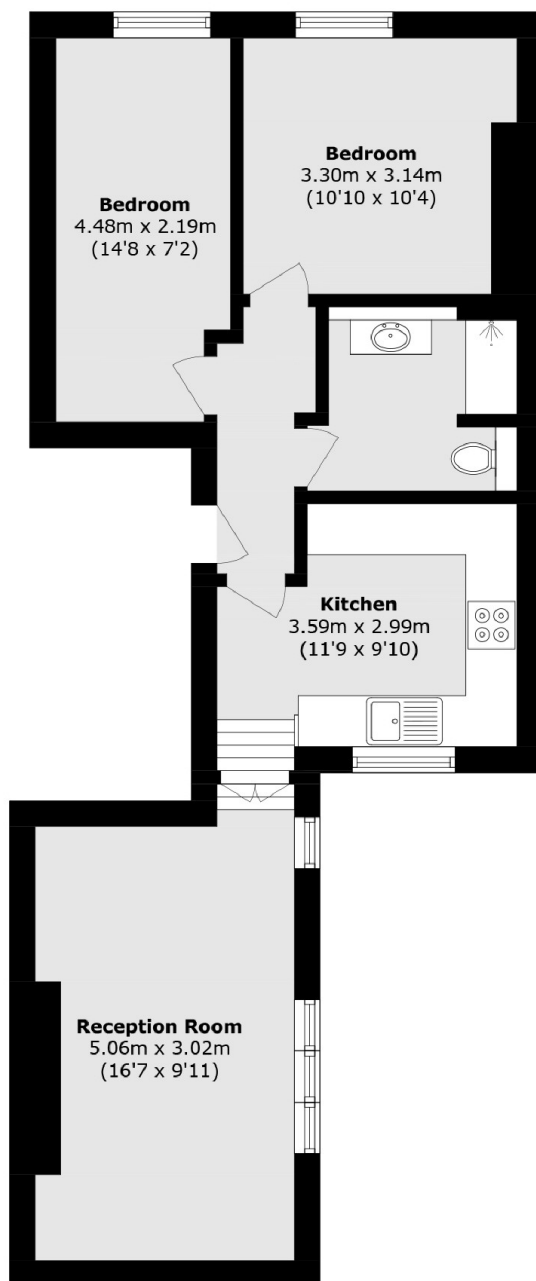
A second floor flat set in a Victorian conversion. The property offers two double bedrooms, a separate kitchen and a large, modern family bathroom. This property is being offered chain free.

Malvern Road features a multitude of shops and cafés, and is within half a mile of transport links to Central London, including Maida Vale underground station (Bakerloo line), and Paddington Recreation Ground.

Features

- Two Bedrooms
- Second Floor Flat
- Chain Free
- Separate Kitchen
- Share of Freehold
- Great Location

Malvern Road, London, NW6



Total area (approx.): 53.4 sq. m (574.7 sq. ft)

Dexters

Maida Vale
298 Elgin Avenue
London
W9 1JS
Sales
020 7266 2020

Energy Rating: C. We aim to make our particulars both accurate and reliable. However they are not guaranteed; nor do they form part of an offer or contract. If you require clarification on any points then please contact us, especially if you're traveling some distance to view. Please note that appliances and heating systems have not been tested and therefore no warranties can be given as to their good working order.

 **RICS** | Regulated
Estate Agent
and Letting Agent

[dexters.co.uk](https://www.dexters.co.uk)