

Sutherland Avenue, W9

£830 Per week

Recently refurbished split level three bedroom flat. Finished to a good standard throughout, there is a large open-plan kitchen / reception, three double bedrooms, a contemporary shower room and a private roof terrace.

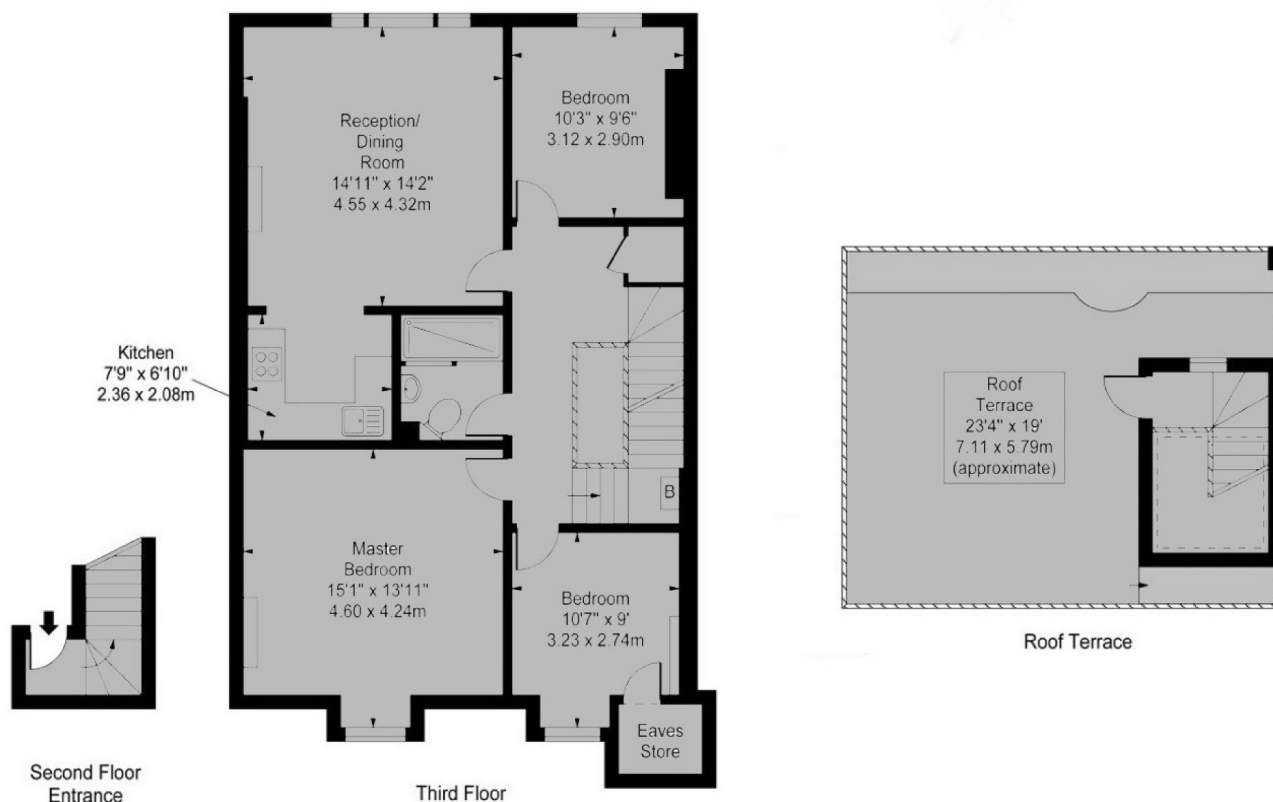
Sutherland Avenue is within a short walk of both Maida Vale and Warwick Avenue tube stations as well as the various other local shops and cafes.

Features

- Period Conversion
- Recently Refurbished
- Three Bedrooms
- Split Level Flat
- Roof Terrace
- Communal Gardens

Sutherland Avenue, Maida Vale, W9

SUTHERLAND AVENUE, W9



Approx. Gross Internal Area 87.79 SqM (944.9 SqFt)

For Illustration Purposes Only - Not To Scale

Dexters

Maida Vale
298 Elgin Avenue
London
W9 1JS
Lettings
020 7266 2021

Energy Rating: E. We aim to make our particulars both accurate and reliable. However they are not guaranteed; nor do they form part of an offer or contract. If you require clarification on any points then please contact us, especially if you're traveling some distance to view. Please note that appliances and heating systems have not been tested and therefore no warranties can be given as to their good working order.

 **RICS** | Regulated
Estate Agent
and Letting Agent

dexters.co.uk