



Albert Road, NW6

£507 Per week

Modern double bedroom flat in excellent condition in this new-build development with a 24 hour concierge. The flat has a large open plan kitchen/reception room with full length private terrace.

Birchside Apartments are located in the heart of Queen's Park and benefit from all the shops, restaurants and cafés of Salusbury Road, the M&S Simply Food and Sunday Farmers' Market. Additionally, it offers great transport links with Queens Park tube and overground station right on its doorstep, as well as Brondesbury Park overground station located a short walk away.

Features

- New Development
- Open Plan Kitchen
- Spacious Reception Room
- Full length balcony
- Underfloor Heating
- 24 Hour Concierge

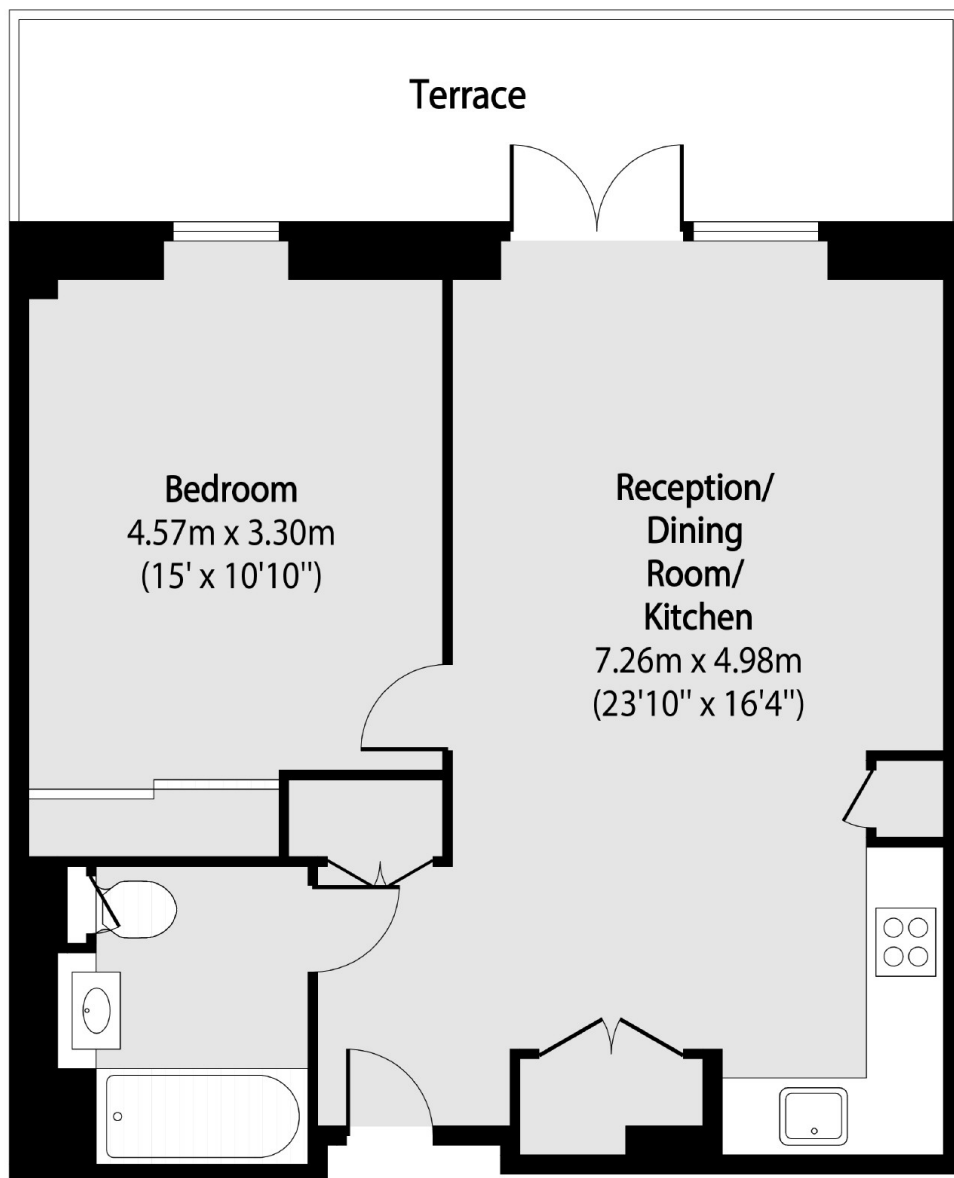


Albert Road, NW6

New development in heart of Queens Park
Bathroom with integrated shower
Bright spacious open planned living room/ kitchen
Living room with full length private terrace
Double bedroom with fitted wardrobes
Underfloor heating
24 hour concierge
Available fully furnished & equipped (including kitchenware & other amenities)



**Albert Road,
London, NW6**



Total area (approx): 50.26 sq m (541 sq. ft)

Terrace total area (approx): 11.80 sq m (127 sq. ft)