

## Ashmore Road, W9

### £550,000

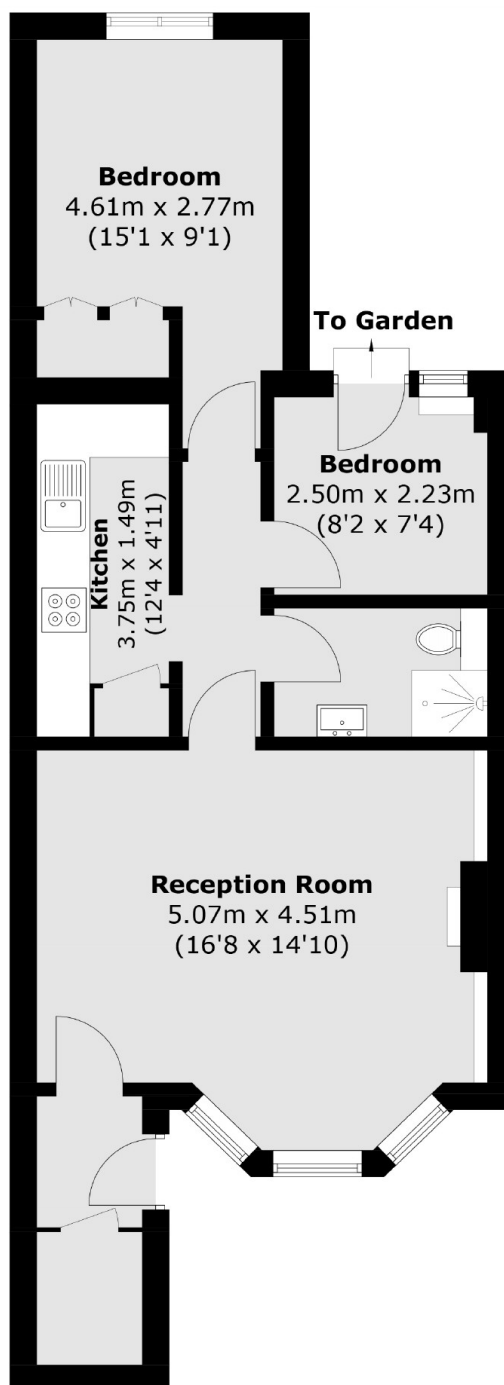
This charming garden-level flat is part of a Victorian conversion and features two bedrooms. The property boasts a spacious reception room, a separate kitchen, and a well-maintained garden. It also includes a generously sized bathroom and a private entrance.

Ashmore Road offers excellent access to Queen's Park and Westbourne Park, with numerous transport links to Central London. It is also within a mile of Little Venice, Portobello, and Paddington Recreation Ground.

### Features

- Recently Refurbished
- Great Transport Links
- Private Garden
- Wooden Floors Throughout
- Separate Kitchen
- Victorian Features

# Ashmore Road, Maida Vale, W9



Total area (approx.): 55.9 sq. m ( 601.7 sq. ft)