



Shirland Road, W9

£450,000

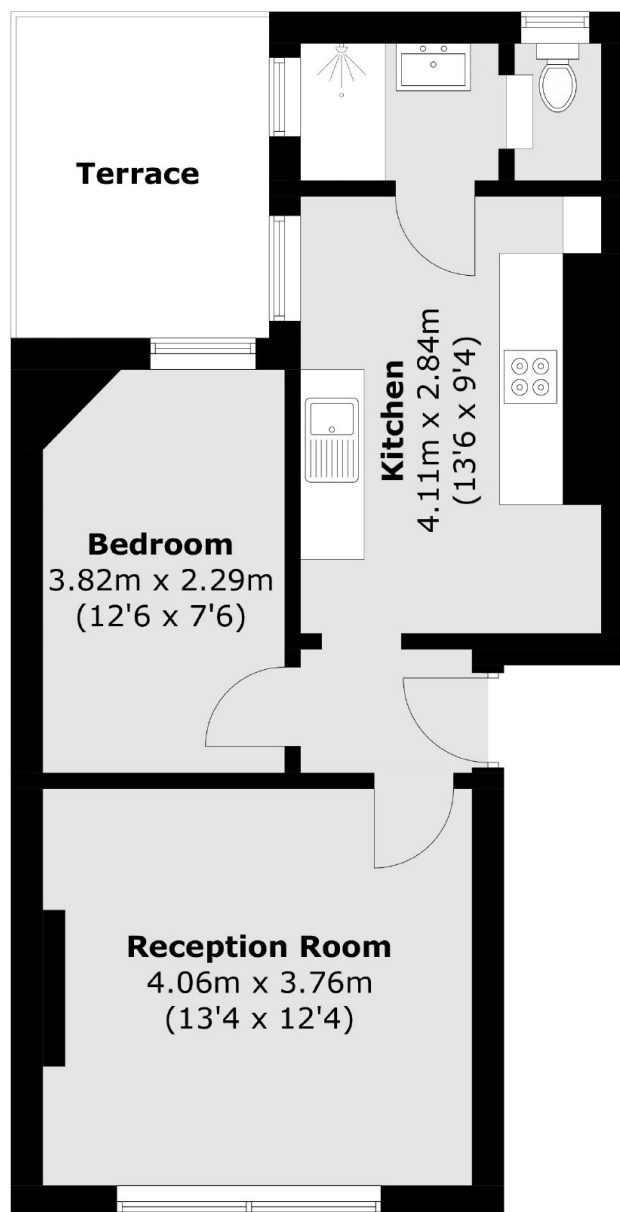
A welcoming raised ground floor flat set in a purpose-built block. This property features a spacious reception, a double bedroom with built-in storage, a modern kitchen and private terrace.

Shirland Road is within walking distance of Paddington Recreation Ground, various shops and restaurants, and the transport links of both Maida Vale and Warwick Avenue.

Features

- Purpose-Built Block
- Share of Freehold
- Spacious Lounge
- Private Terrace
- Gated Entrance
- Good Location

Shirland Road, Maida Vale, W9



Total area (approx.): 43.1 sq. m (463.9 sq. ft)
Terrace: 7.3 sq. m (78.6 sq. ft)

Dexters

Maida Vale
298 Elgin Avenue
London
W9 1JS
Sales
020 7266 2020

Energy Rating: D. We aim to make our particulars both accurate and reliable. However they are not guaranteed; nor do they form part of an offer or contract. If you require clarification on any points then please contact us, especially if you're traveling some distance to view. Please note that appliances and heating systems have not been tested and therefore no warranties can be given as to their good working order.

 **RICS** | Regulated
Estate Agent
and Letting Agent

[dexters.co.uk](https://www.dexters.co.uk)