

Bravington Road, W9

£925,000

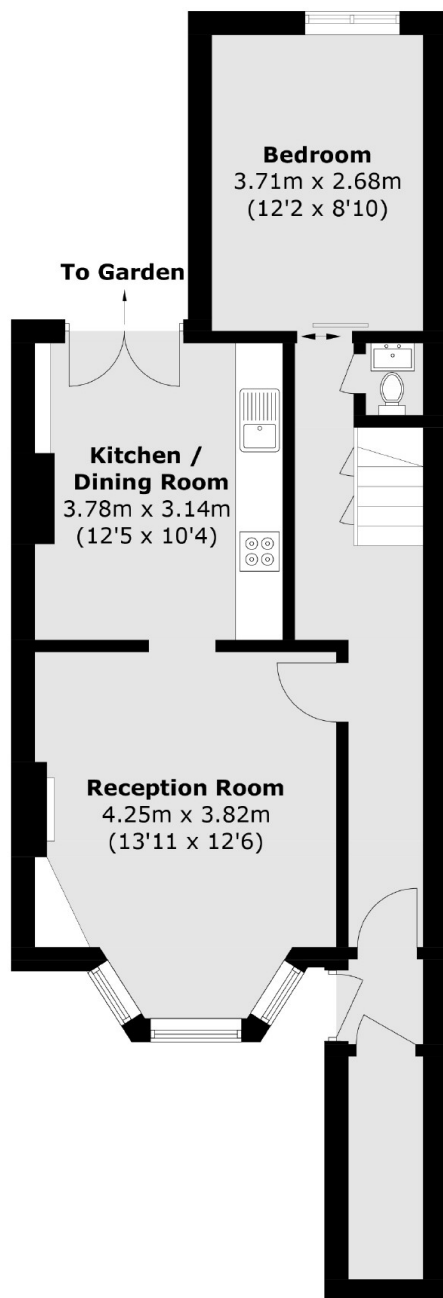
A spacious maisonette set in a charming Victorian conversion. This property features a reception with a bright bay window leading into the separate kitchen, three double bedrooms, one of which includes an en suite, an additional bathroom and WC, and a private garden.

Bravington Road is a residential street with convenient access to Queen's Park or Westbourne Park, as well as several transport links to Central London. The property is located within a mile of Little Venice, Portobello and Paddington Recreation Grounds.

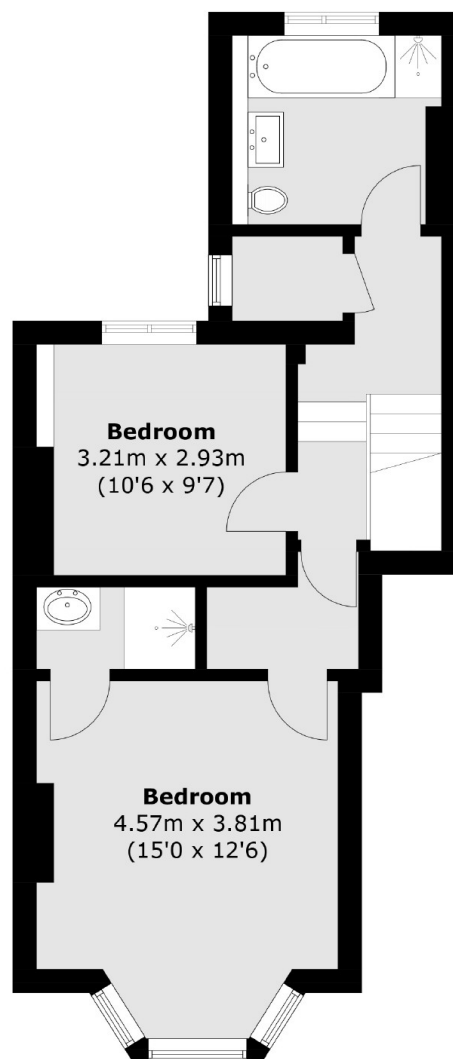
Features

- Separate Kitchen & Dining
- Two Bathroom
- Chain Free
- Share of Freehold
- Ad Hoc Service Charge
- Great Transport Links

Bravington Road, Maida Vale, W9



Lower Ground Floor



Ground Floor

Total area (approx.): 100.3 sq. m (1,079.6 sq. ft)