



Saltram Crescent, W9

£515,000

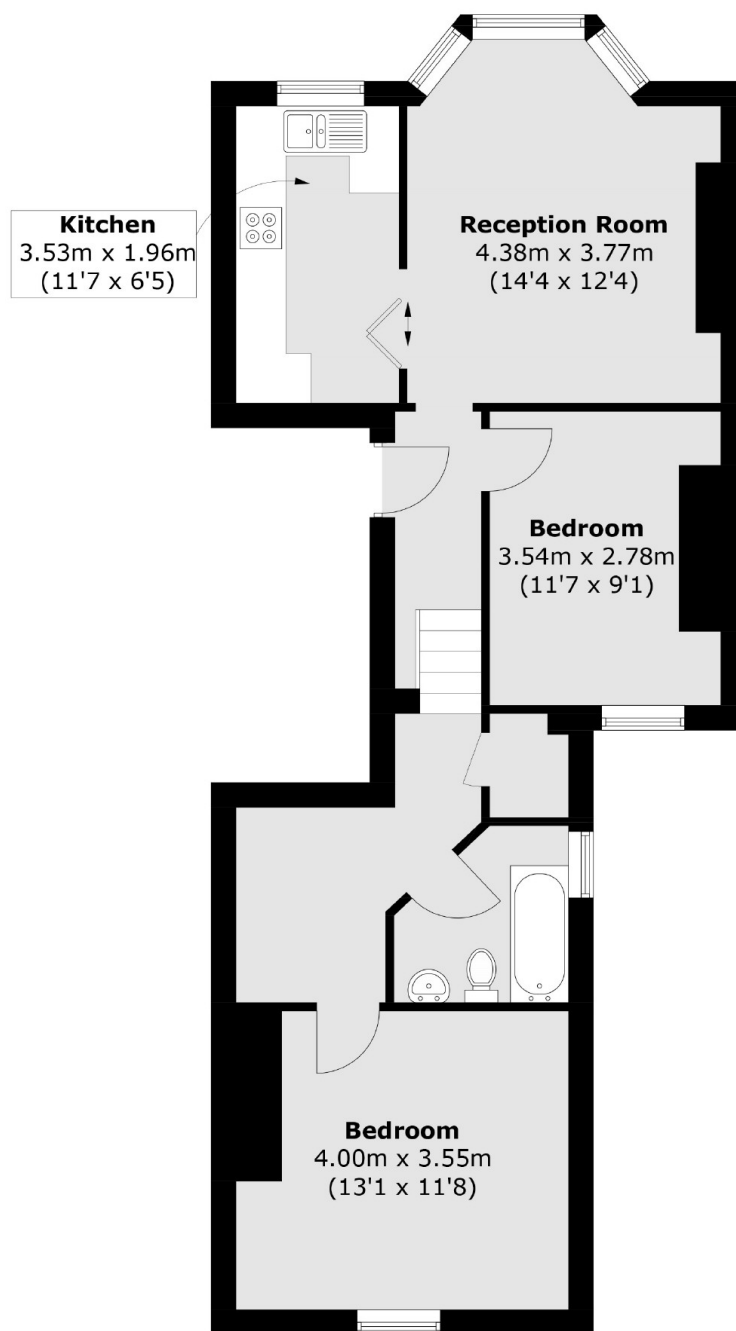
A first floor flat set in a period conversion. The property offers a separate kitchen with a pocket door leading to the reception room featuring a bay window, two double bedrooms and is available chain free.

Saltram Crescent is one road away from Queens Park, providing easy access to multiple transport links as well as the wide range of amenities along Salusbury Road and the Farmer's market every Sunday.

Features

- Two Double Bedrooms
- Separate Kitchen
- First Floor Flat
- Chain Free
- Great Location
- Good Transport Links

Saltram Crescent, Maida Vale, W9



Total area (approx.): 63.4 sq. m (682.7 sq. ft)