



## Goldney Road, W9

£1,615 Per week

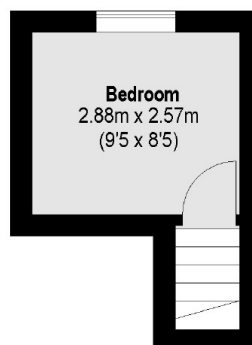
Spacious and recently refurbished split level four double bedroom flat with a private entrance and private garden.

Goldney Road is ideally located within easy reach of local amenities and transport links including Westbourne Park, Maida Vale and Warwick Avenue underground stations as well as Paddington station with national and international connections.

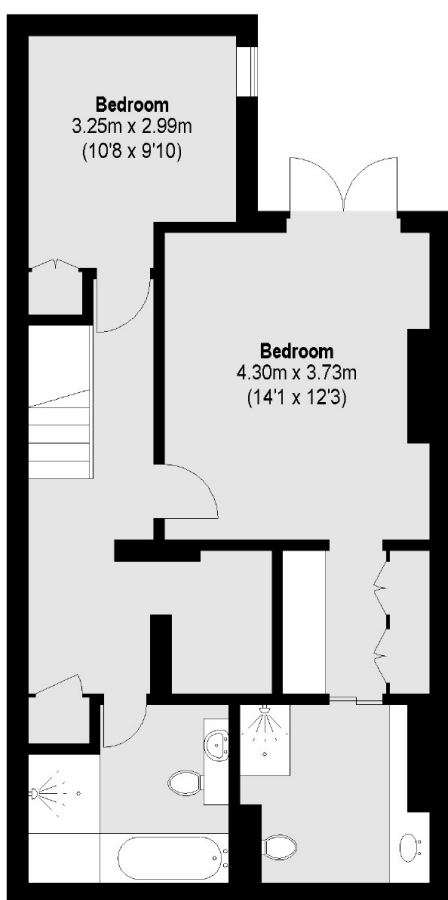
### Features

- Newly Refurbished
- Four Double Bedrooms
- Two Bathrooms
- Private Garden
- Private Entrance
- Study Area

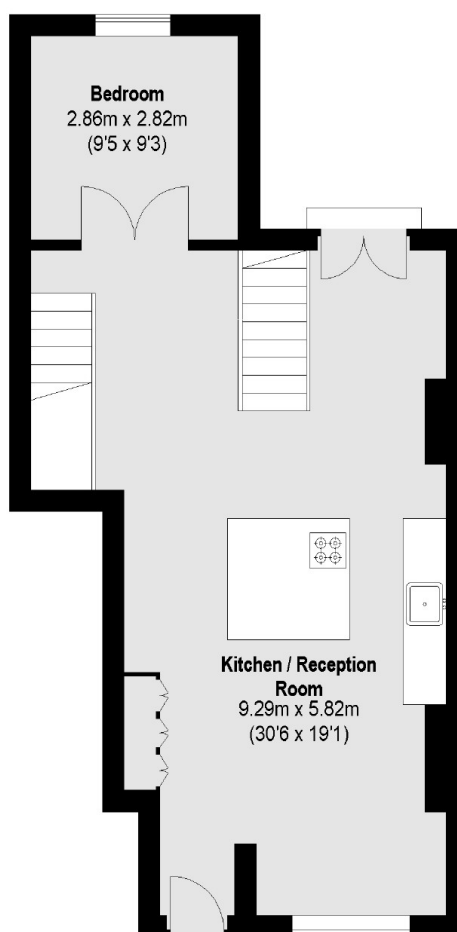
# Goldney Road, Maida Vale, W9



**First Floor**



**Lower Ground Floor**



**Ground Floor**

Total area (approx.): 122.55 sq. m (1319 Sq. ft)