



Clifton Villas, W9

£1,650,000

A classic split-level apartment located in one of Little Venice's most iconic white stucco-fronted buildings. Immaculately maintained, this delightful flat seamlessly combines modern sophistication with desirable period details, offering a bright and spacious living space just moments from the picturesque canal in Little Venice.

Clifton Villas is a beautiful residential road near the canal in Little Venice. Around the corner is Warwick Avenue underground station (Bakerloo line), which allows for convenient access into central London. The property is located within walking distance of amenities both in Little Venice and Maida Vale, including restaurants, shops and cafés.

Features

- White-Stucco Fronted
- Split-Level
- Private Patio
- Direct Access to Communal
- Period Features
- Prime Location

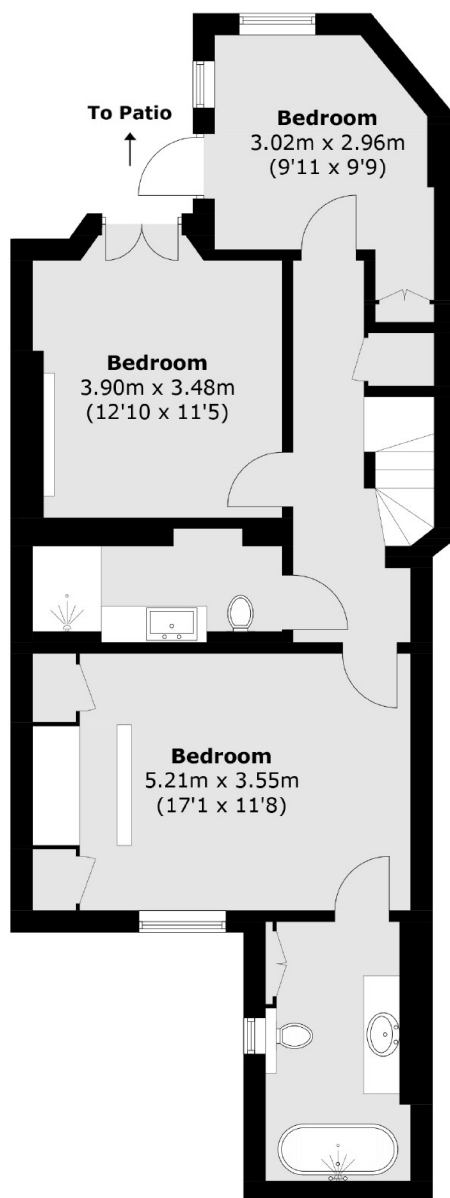


Clifton Villas, W9

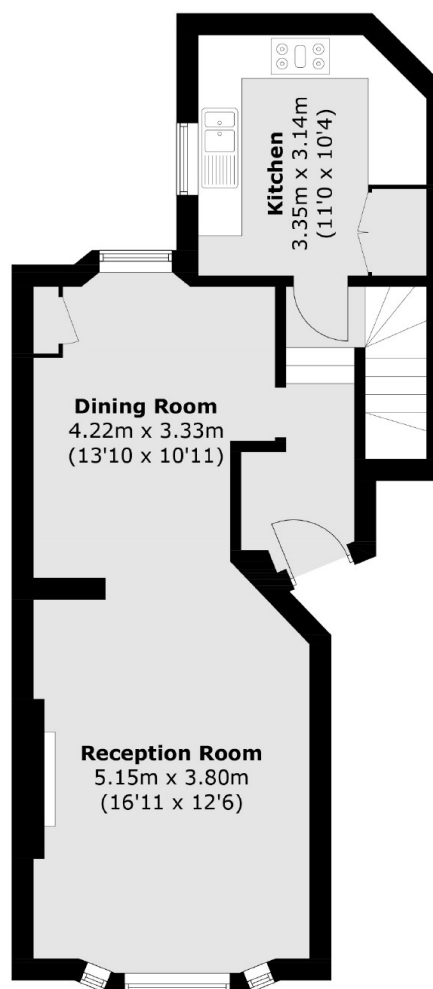
At the entrance to the property, you will find a spacious, double-aspect reception room and dining area with original ornate cornicing, ceiling rose and working fireplace which acts as a focal point. The property benefits from high ceilings which are a main feature on both floors. Further along the corridor is the fully-equipped kitchen, featuring dark wood cabinetry that offers plenty of storage. Descending the stairs, you'll discover three double bedrooms, two of which have direct access to the patio. The main master bedroom benefits from a stylish en-suite and screened walk-in wardrobe space.



Clifton Villas, Maida Vale, W9



Lower Ground Floor



Ground Floor

Total area (approx.): 115.8 sq. m (1,246.4 sq. ft)