



Elgin Avenue, W9

£475,000

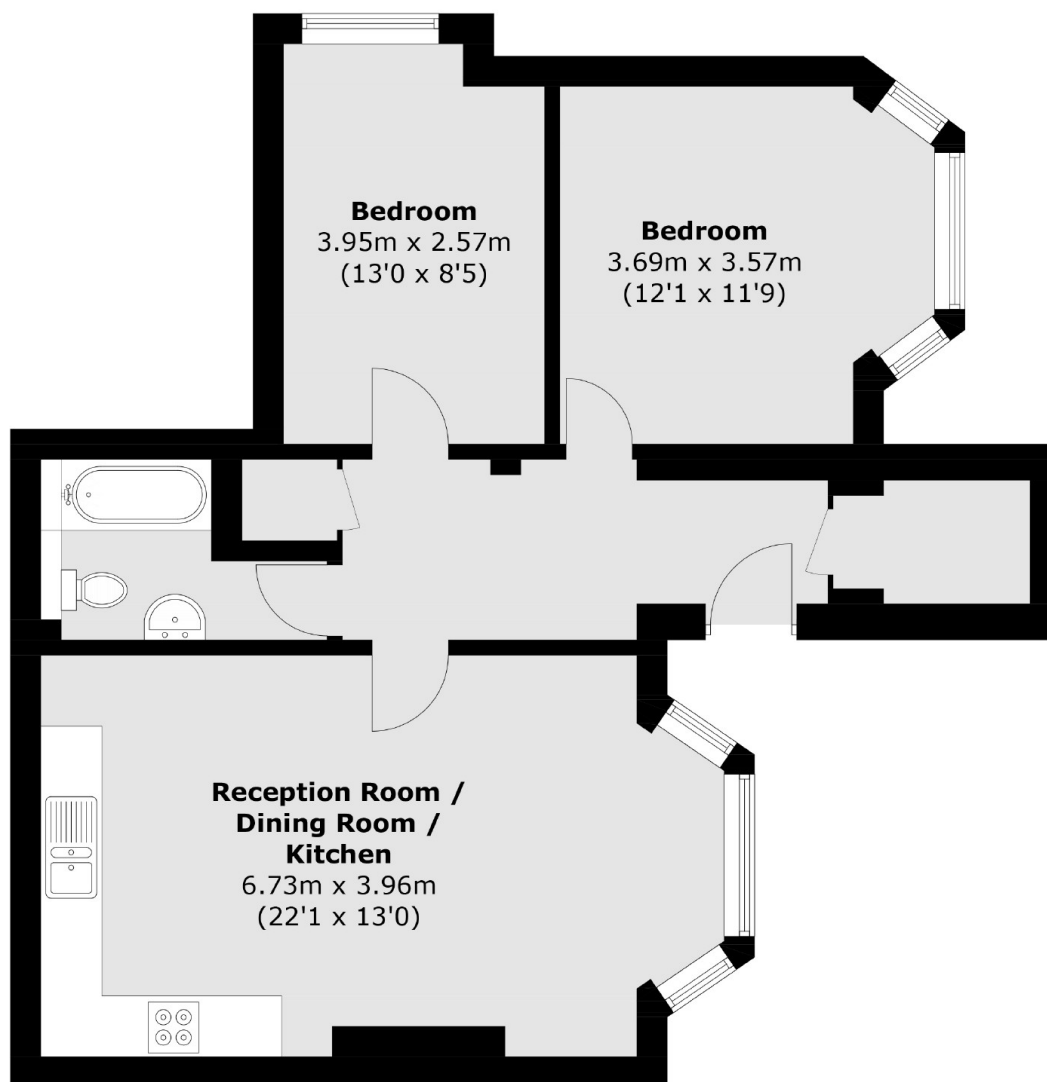
A lower ground floor flat set in a period conversion. This property offers two double bedrooms, an open plan reception room/kitchen with a bay window and a storage room.

Elgin Avenue offers convenient access to local amenities and the green spaces of Paddington Recreation Ground and Tamplin Mews Gardens. The property is within walking distance of Westbourne Park and Maida Vale underground stations (Bakerloo line) providing direct links to central London.

Features

- Lower Ground Floor
- Period Conversion
- Two Double Bedrooms
- Chain Free
- Great Location
- Good Transport Links

Elgin Avenue, Maida Vale, W9



Total area (approx.): 65.0 sq. m (699.7 sq. ft)