



Elnathan Mews, W9

£1,650,000

A delightful mews house spread across three levels, offering a spacious layout with three double bedrooms, two bathrooms, Juliette balcony, contemporary skylights to both reception rooms, a separate kitchen, and a integral garage (Potential to convert STPP). This home is perfect for families, professionals, or anyone seeking a blend of comfort, convenience, and style.

Elnathan Mews is a quiet, cobbled mews near the canal in Little Venice. The property is within a three minute walking distance of Warwick Avenue underground station (Bakerloo Line) and the cafés, shops and restaurants along both Formosa Street and Clifton Road. Paddington station (Bakerloo, District & Circle, Hammersmith & City and Elizabeth Line) is also within easy reach, offering excellent connections to Heathrow and central London.

Features

Gorgeous Freehold Mews
Air-Conditioning
Juliet Balcony
Garage
Great Transport Links
Prime Location in Little Venice

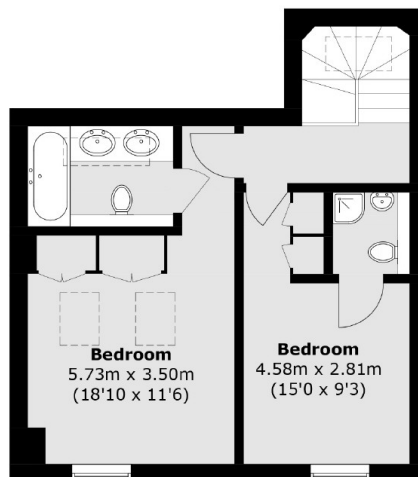


Elnathan Mews, W9

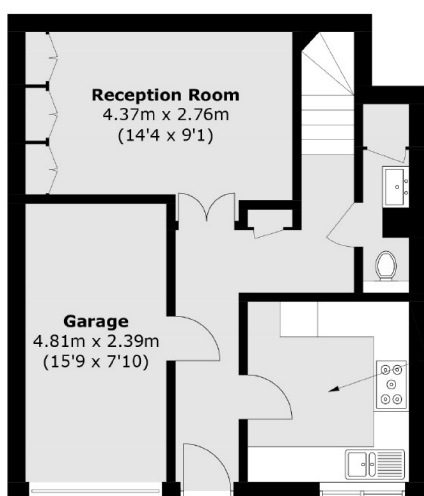
This stunning property blends late 20th Century features with contemporary elements, making it a functional and elegant living space. On the ground floor, there is the kitchen with built-in Miele appliances, with underfloor heating and a reception room, providing a convenient space to host gatherings with family and friends. There is a guest W/C and cloakroom which also includes built in storage. The first floor mezzanine features the second reception room with a balcony overlooking the mews, as well as one of the three double bedrooms. The second floor boasts two bedrooms with en suites and air conditioning. With access to more storage into the loft.



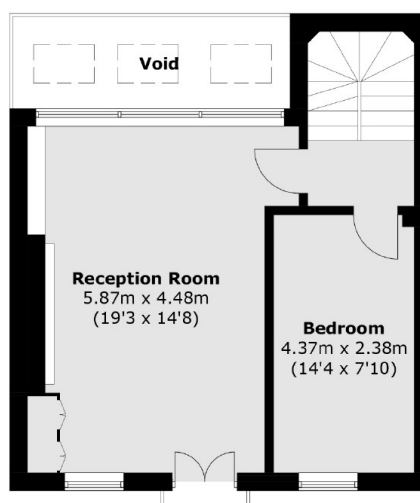
Elnathan Mews, Maida Vale, W9



Second Floor



Ground Floor



First Floor

Total area (approx.): 130.0 sq. m (1,399.2 sq. ft)
(Excluding Void)