



Elgin Avenue, W9

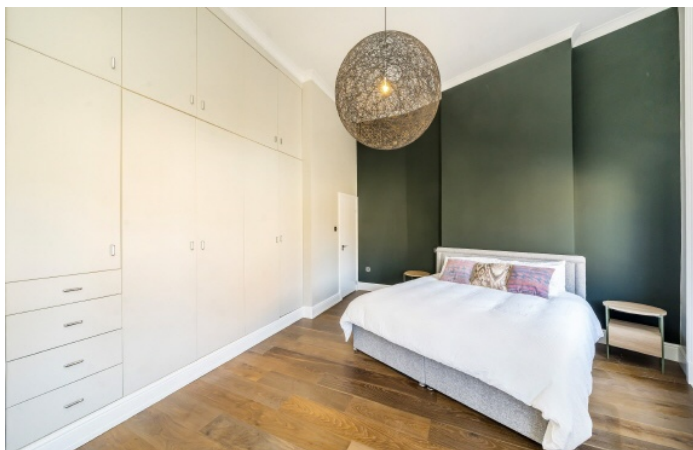
£1,450,000

This exceptional split-level apartment is located within a charming Victorian conversion. Recently refurbished, it features an abundance of natural light and offers a generously sized reception area, three double bedrooms, and three bathrooms. The large sash windows flood the space with sunlight, while the spiral staircase adds a unique touch to this delightful apartment.

Elgin Avenue is in the heart of Maida Vale. The property is conveniently located within walking distance of several transportation links, including Maida Vale station (Bakerloo line), a myriad of restaurants, cafés and shops, and the green spaces of Paddington Recreation Ground.

Features

- High Ceilings
- Large Sash Windows
- Three Bathrooms
- Split-Level
- Chain Free
- High Specification Finish

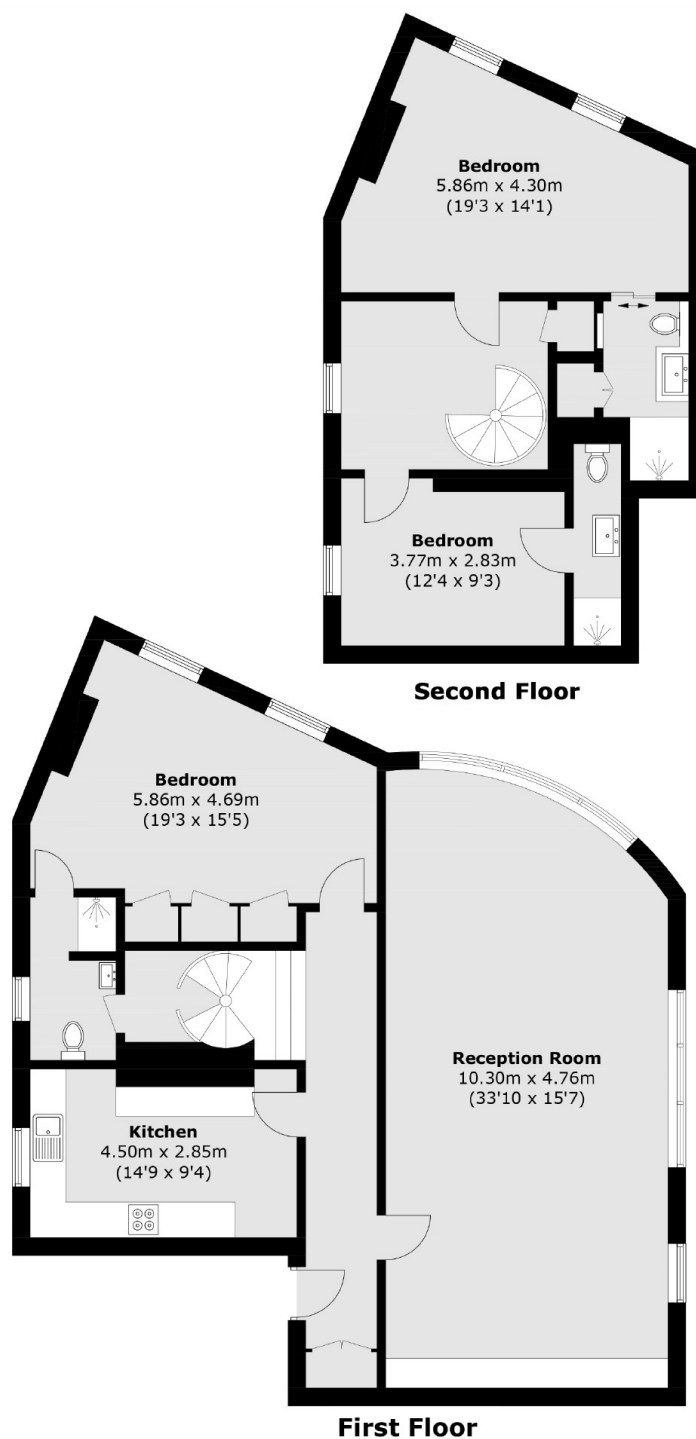


Elgin Avenue, W9

This beautiful apartment in turnkey condition features a large, high-ceilinged reception room, perfect to host family gatherings. Opposite is the separate, fully-equipped kitchen and one of the three bathrooms, which also has a door leading to one of the bedrooms, acting both as a guest bathroom and an en suite. The spiral staircase leads to the other two bedrooms on the second floor, each with their own en suites.



Elgin Avenue, Maida Vale, W9



Total area (approx.): 154.0 sq. m (1,657.7 sq. ft)