



## Dixon Butler Mews, W9

### £900,000

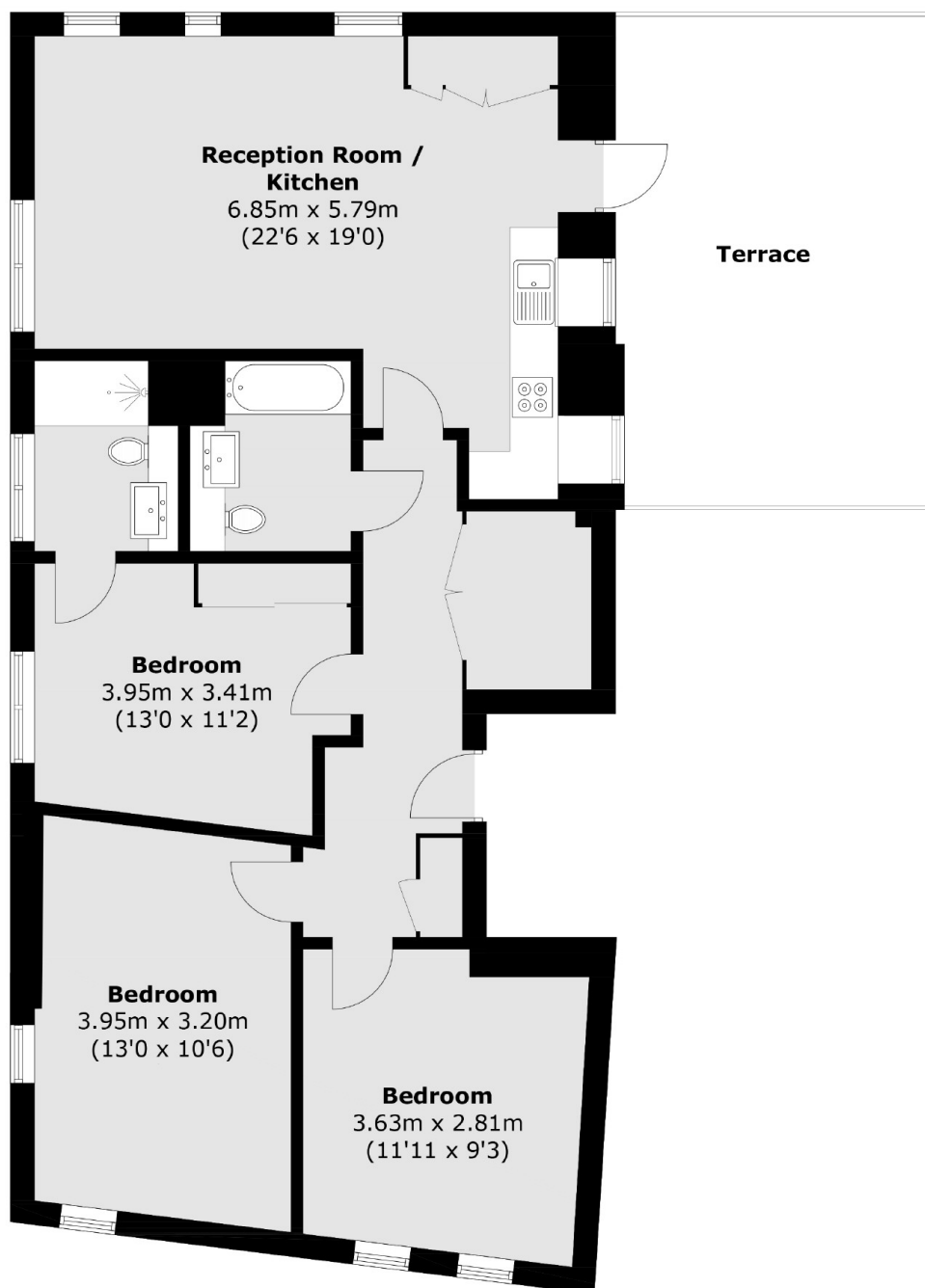
A second floor flat set in a purpose-built block. This apartment offers three double bedrooms, one of which features an en suite, open plan kitchen/reception with a door leading out onto the terrace and large sash windows throughout which allow for plenty of sunlight. The property is being offered chain free and with a long lease.

Dixon Butler Mews is within walking distance of the shops and restaurants along Harrow Road, as well as Westbourne Park underground station (Circle and Hammersmith & City line) and the Canal in Little Venice.

### Features

- Second Floor Flat
- Purpose-Built Block
- Private West Facing Terrace
- Open Plan Kitchen
- Chain Free
- Long Lease

# Dixon Butler Mews, Maida Vale, W9



Total area (approx.): 95.8 sq. m (1031 sq. ft)  
Terrace: 24.5 sq. m (263.7 sq. ft)